

# AGENDA

<b>Meeting:</b>	<b>North Place Delivery Board</b>
<b>Date:</b>	Tuesday, 05 September 2023
<b>Time:</b>	16:00 – 17:30
<b>Venue:</b>	Via Teams only
<b>Chair:</b>	Ali Gilbert

Item	Verbal/ Paper	Subject	Lead	Time
<b>01</b>	Verbal	<b>Welcome &amp; apologies</b>  David Watts Karen Spellman Anne Rackham (Dan Holling)	Ali Gilbert	16:00
<b>02</b>	Papers	<b>Previous meeting - 04 July 2023</b>  a) Minutes b) Action log	Ali Gilbert	16:00
<b>03</b>	Presentation	<b>LAPs – Priorities</b>  a) LAP Delivery Executive Summary b) LAP Asset mapping	Ali Gilbert/  Kerry Purnell	16:10
<b>04</b>	Presentation	<b>North Health and Wellbeing Strategy 2023 - 2028</b>	Ali Gilbert/ Chris Kenny	16:25
<b>05</b>	CWF agenda	<b>Community Wellbeing Forum (CWF) - Agenda for September meetings</b>	CWF chairs	16:40
<b>06</b>	Presentation  Presentation	<b>VCSE and SNN</b>  a) North VCSE Engagement b) Support North Northants (SNN)	Sean Silver  Pratima Dattani	16:55  17:10
<b>07</b>		<b>Close of meeting</b>	Ali Gilbert	17:25
<b>08</b>		<b>Next meeting dates:</b>  Tuesday, 03 October at 16:00 Tuesday, 07 November at 16:00	Ali Gilbert	

# MINUTES

## Item 2a

<b>Meeting:</b>	<b>North Northamptonshire Place Delivery Board</b>
<b>Date:</b>	Tuesday, 04 July 2023
<b>Time:</b>	4.00 pm – 5.30 pm
<b>Venue:</b>	Via Teams

<b>Attendees</b>			<b>Present</b>	<b>Apologies</b>
Ali Gilbert - Chair	AG	ICS Director of Place, NNC	√	
Alison Gilmour	AGI	Director of Strategy, NHFT		√
Anne Rackham	AR	Acting Chief Operating Officer/SRO, NHFT		√
Bhavna Gosai	BG	Head of Programme Delivery, ICS, NHCP	√	
Cate Carmichael	CC	Consultant, Public Health, NNC	√	
Chris Holmes	CH	Chief Executive, Northamptonshire Sport	√	
Chris Kenny	CK	Consultant, Public Health, NNC	√	
Chris Pallot	CP	Interim Deputy Chief Operating Officer, NICB		
Chris Perks	CP	Consultant, Northamptonshire Sport	√	
Daniel Holling	DH	Deputy Director of Contracting, NICB	√	
Danny Moody	DM	Chief Executive, Northants CALC	√	
David Watts	DW	Executive Director, Adults, Health Partnerships & Housing, NNC		√
Debbie Lloyd	DL	Northamptonshire Children's Trust	√	
Dr Sanjay Gadhia	SG	Deputy Chair, Lakeside Healthcare Group	√	
Emma Donnelly	ED	ICB GP lead		
Evonne Coleman-Thomas	ECT	Assistant Director Strategic Housing, Enabling & Property Services, NNC	√	
Graeme Kane	GK	Executive Director of Place and Economy, NNC	√	
Guy Holloway	GH	Assistant Chief Executive, NNC	√	
Hazel Webb	HW	Strategic Lead – Communities & Wellbeing	√	
Helen Goult	HG	Executive Assistant	√	
James Gillespie-Allan	JG	Engagement Lead Integrated Care Northamptonshire	√	
Jess Slater	JS	Chief Executive, SERVE	√	
Karen Spellman	KS	Director of Integration and Partnerships, ICB		√
Kate Holt	KH	Chief Executive Healthwatch Northamptonshire		√
Keith Reynolds	KR	Kettering General Hospital	√	
Kerry Purnell	KP	Assistant Director Communities & Leisure, NNC	√	
Lisa Bryan	LB	Prevention Lead, Northants Fire and Rescue		√
Paul Birch	PB	Associate Director Population Health		√
Pratima Dattani	PD	Chief Executive, Support Northamptonshire	√	
Sean Silver	SS	Groundwork – Kettering and Corby	√	
Shirley Plenderleith	SP	Assistant Director Public Health, NNC	√	

Steven Freeman	SF	Superintendent, Northamptonshire Police		√
Susan Hamilton	SHA	Interim Director of Public Health, NNC		√
Susan Hillsok	SH	Healthwatch Northamptonshire	√	

Item	Subject
01	<b>Welcome and apologies</b>
02	<p><b>Minutes and action log from the previous meeting 28 February 2023</b></p> <ul style="list-style-type: none"> <li>Minutes – the minutes were agreed as a true record of the meeting.</li> <li>Action Log – all actions are complete, any that are outstanding will be discussed at today's meeting.</li> </ul> <p>Agenda item for the next meeting 01 August 2023: <i>Intelligent Laps – Lisa Bryan</i></p>
03	<p><b>LAP Investment Fund</b> – presentation Shirley Plenderleith (SP)</p> <p>SP presented the Well Communities research, Arts Humanities Research Council (AHRC) funding bid which builds on activities around the Well Northants programme ongoing in WNC and NNC. The bid was awarded during the pandemic but work did not commence until 2021/22; the bid amount is for £2.7M.</p> <p><b>Background</b> – AHRC funding is a consortium led by the City of London University, University of Northampton, WNC and NNC. The academics are writing the bid and NNC are supporting it. The submission date is the end of July.</p> <p>Bids for Round 3 of the funding is a much bigger round, with neighbourhoods in both Corby and Wellingborough included from the existing project. In the process of developing a blueprint in how to use the funding.</p> <p>The two research questions which will be addressed by the consortium:</p> <ol style="list-style-type: none"> <li>1) <i>What are the drivers of health inequalities in our most deprived communities and how can health and care systems, in different contexts, interface with and help develop and mobile, community assets in tackling health inequalities.</i></li> <li>2) <i>How can community asset-based approaches in health and care systems be scaled-up, sustained, evaluated and optimised to contribute to reducing inequalities?</i></li> </ol> <p>There will be six work packages over a 36 month period. The scale of scope is much bigger than previously and the team will be looking at how it can be used within the ICS including the outcomes and impact. The funding bid may or may not be successful.</p> <p>Pratima Dattani (PD) requested that both Race Equality and cultural assets of black communities were built into the bid. <b>Action 2023.07/06</b> - SP to add PD's comments to the bid submission.</p> <p><b>LAP Investment Fund</b></p> <p>AG advised that the governance had been agreed with the Interim Director of Public Health for the LAP Investment Fund. This is funding of £320,000 that is sitting within</p>

	<p>Public Health, HIAA LAP Fund. This funding can be drawn down for investment in the actions that are being progressed in the LAPs.</p> <p>SP advised that the Public Health team would draft a basic template and provide guidance notes for circulation to the Community Wellbeing Forum (CWF). The bids will then be developed through the LAP leads and groups with sign-off from the CWF.</p> <p>The NNC Public Health team will review against the criteria for the funding with final sign-off by the Director of Public Health and the ICS Director of Place. For bids over £100,000 these will need to go through further internal NNC governance for sign-off.</p>
<p><b>04</b></p>	<p><b>North Place maturity tool proposal</b></p> <p>AG explained that each of the LAPs will develop at a different pace. SP explained the framework and the three different strands around the North Place maturity tool proposal.</p> <p>The Place Standard tool is a way of assessing Places and was designed by NHS Scotland to:</p> <ul style="list-style-type: none"> <li>• Assess and improve the quality of both new and existing Places;</li> <li>• Bring communities, the public sector and third sector together to deliver high quality places.</li> <li>• Promote consistency so everyone has an equal chance of living in a good quality area.</li> <li>• Ensure people’s physical and social environments support them to live healthy, happy lives.</li> </ul> <p>The outputs are based around a <b>spider diagram</b> with 14 different pieces of the spider’s web, a scoring system of 1 – 7 which is scored by joining the dots to obtain a picture to compare. The team have taken feedback and agreed that 14 elements are too much at this stage.</p> <p>The team are also reviewing a web based tool used by Highways called CommonPlace or Citizen Panel already used by NNC, this tool would be based on using 3 – 5 questions.</p> <p>AG explained this was a refinement of a standardised tool used by NHS Scotland to ensure that week on week evaluation of progress and the development of the LAPs was measured.</p> <p>GH – the Citizen’s Panel is used for residence panels within Comms. Planning use a different tool and are trying to obtain a uniform solution. <b>Action 2023.07/07:</b> SP to reconnect with Stuart Whittlesey (SW) regarding the best tool to use. JG would also be contacting SW.</p> <p>James Gillespie (JG) informed that Northamptonshire Police had also launched an engagement platform tool called Northamptonshire Talking. JG was conscious that multiple organisations were reaching out to the same audience via different platforms and tools. <b>Action 2023.07/08:</b> AG to contact Steve Freeman (SF) re the Police engagement platform.</p> <p>Keith Reynolds (KR) – the discussion had been around the inputs, and how green spaces and access to transport paid an important part around people’s mental health; KR asked how the impact would be measured over the next 4/5 years and the impact this would be having on people’s health.</p>

	<p>SP said some of the work within the LAPs had identified transport access and mental health issues within the areas. Hopefully the measurements will show there has been improvement and improved access to services.</p>
<p><b>05</b></p>	<p><b>A New Sense of Place</b>  <b>a) LAPs Oversight Delivery Plan – priorities – multi-agency groups</b></p> <p>Kerry Purnell (KP)/Hazel Webb (HW) presented on the LAPs Multi-agency Task Action Groups (MTAG). Following on from Phase 3 have now moved into a series of MTAGs for which 5 out of 6 of the themed LAPs have been completed:</p> <ul style="list-style-type: none"> <li>• Bringing together the right people, eg Elected Members, residents, voluntary and community sector and statutory organisations to respond to local needs and deliver outcomes from the Northamptonshire Integrated Care Partnership Strategy and local Joint Health and Wellbeing Strategy.</li> <li>• Many of the actions have been similar regardless of the subject/theme particularly around engagement.</li> <li>• Individual Action Logs for each LAP show the outcome, how, who, milestone and timeline target.</li> <li>• Feedback from the sessions – networking conversations have been really positive and engaging. Challenges in some areas, supporting specific action planning and to guide people to agree tangible actions and take ownership.</li> <li>• Next steps – amend action plans following on from LAP discussions, identify short and medium term goals. Identify further key groups/partners to attend.</li> <li>• Feedback to the Community Wellbeing Forums (CWF) in September.</li> <li>• AG – broader engagement and community leadership required and suggested to PD that Father Ben be invited to participate. Sean Silver (SS), Groundwork attended a positive session at Corby, and said there was a gap in provision and an opportunity to make a change as currently there is no medical car service in Corby for people to attend vital appointments. SS said the community needs resources from a higher level to fund the changes.</li> <li>• AG – further meeting to be held with the CWF chairs, Assistant Directors and teams to ensure the sessions are streamlined, have infrastructure and leads are aligned to all of the areas to ensure emerging actions are addressed.</li> <li>• AG suggested that HW, show within the timelines dates when there will be tangible difference, AG would like to know the high level end point as suggested by SS.</li> </ul>
<p><b>06</b></p>	<p><b>Public campaign proposal</b></p> <p>James Gillespie (JG) discussed the public campaign proposal but could not share the document until had been circulated to the wider system partners and through the government process.</p> <p>This is a two-phased approach, system wide including community engagement around the ‘Live your Best Life Ambitions’, the five-year joint void plan and NNC/WNC’s Health and Wellbeing Board strategic plans in how that all comes together and feeds into the proposal.</p> <p><b>Phase One</b> - conversations with ICN partners, and the three key priorities for the ICP owners in terms of how we are working towards this at present and what assets do we already have. Partners can submit to the engagement library, this will be followed by an assessment to see where the gaps are.</p>

	<p><b>Phase Two</b> – Public Campaign around ‘Live your Best Life’ and engaging with members of the community; JG to circulate the document when in a position to share.</p>
<p>07</p>	<p><b>Acute Provider Strategy at ‘Place’</b>  <b>Presented by Keith Reynolds, NGH &amp; KGH</b></p> <ul style="list-style-type: none"> <li>• KP presented on ‘Place’ based development of services, what is ‘Place’ in the context of an <b>Acute Trust</b> and how this links in with the LAP priorities and working together to achieve those aims.</li> <li>• NGH and KGH catchment areas are effectively terminus with the North and West ‘Place’. Acute hospitals are anchor institutions and serving populations in each ‘Place’.</li> <li>• In the process of developing a <b>cancer strategy</b> for which there are some parts of the community that are difficult to reach. ‘Place’ will show how cancer services can be more joined up and ensure there is an holistic approach in the follow-up of care.</li> <li>• <b>Group Clinical Strategy</b> now signed off by both boards – to work with ‘Place’ and health and care partners to prevent ill health and reduce hospitalisation.</li> <li>• <b>Priority Outcomes for ICB</b> – strong alignment between the aims of the hospitals, integrated care and local area partnerships.</li> <li>• <b>North Northants LAP Priorities</b> – Crime, COPD, lack of connectivity with communities – impact on demands and increased pressures of the emergency departments.</li> <li>• <b>New hospital construction KGH</b> which has been accepted, in a very strong position to go forward with funding. In two phases, with work commencing in 2025/26 – new urgent treatment centre, endoscopy diagnostic imaging, operating theatre, critical care unit, mortuary and in-patient wards.</li> <li>• Firstly, there will be less investment in office space and KP asked the board to consider if there was any suitable accommodation, co-funding space whereby health services could work alongside other services already have in the community, ie shared office and clinical spaces.</li> <li>• Secondly, no money for non-acute patient beds, will need approximately one extra ward of 30 beds every two years. Looking at avoiding people being delayed in hospital and working with local communities to support early discharge from hospital.</li> <li>• Working with partners in the North Place to develop the Corby Community Diagnostic Centre.</li> <li>• Working with iCan to reduce bed demand in line with new hospital capacity.</li> <li>• Links for North Place – Keith Reynolds and West Place – Lisa Drake.</li> <li>• AG informed that the above would need to link to the North Health and Wellbeing Strategy and the new Adult Social Care Strategy.</li> <li>• KP developing a strategic leisure framework which is an integrated health and wellbeing offer as a result of the development at Homewood Park and S106.</li> <li>• G Kane to link K Reynolds with Lexico as part of the One Public Estate conversation to develop opportunities. <b>Action 2023/07/09.</b></li> <li>• PD happy to work with KR on supporting North Northants on early discharge. AG explained this was part of the VCSEs collaborative model of prevention. CWF are leading on the community.</li> <li>• GH mentioned the Big 50 a future vision event in what North Northamptonshire will look like in 2050. Project that can assist with the aspirational points of hospital and healthcare.</li> </ul>

<p><b>08</b></p>	<p><b>Northamptonshire CALC proposal</b></p> <ul style="list-style-type: none"> <li>• Danny Moody (DM), Chief Executive, Northamptonshire County Association of Local Councils (CALC), a membership organisation for all the parish and town councils in the county of Northamptonshire presented as follows:</li> <li>• The development of the Local Area Partnerships (LAPs) provides an opportunity for parish and town councils to contribute to the Integrated Care Partnership and achieve the ten ambitions in the Live your Best Life strategy and embed health and well being across the county.</li> <li>• CALC intend to employ a full-time Health and Wellbeing Manager to engage with the 271 parish and town councils and act as a conduit tween those councils and the unitary councils. The post would be funded by the unitary councils and hosted and managed by Northants CALC.</li> <li>• <b>Action 2023.07/10: AG/KP/DM</b> to discuss the proposal for the new Health and Wellbeing Manager for CALC.</li> </ul>
<p><b>09</b></p>	<p><b>Active Sport – Place Delivery lessons learnt</b></p> <p>Chris Holmes, Chief Executive, Northamptonshire Sport explained they were one of 42 active partnerships sitting across England and set-up and funded by Sports England.</p> <p>CH explained that there was a real wealth of learning and experience from Sport England’s experience over the last five years. They have dramatically shifted their whole strategy nationally towards Place and sharing their learning.</p> <p>CH introduced Chris Perks (CP), previously Executive Director at Sport England who was leading on the work. CP explained how Sport England had invested in four-year pilots in 12 different places in the country which were Place based system change, meaning they were testing what it meant to really engage and work closely with communities and join-up services and influences around how people were being active. <b>Action:</b> HG agenda item for the next NPDB meeting.</p>
<p><b>010</b></p>	<p><b>Support North Northamptonshire (SNN) - case study</b></p> <p>Pratima Dattani, Chief Executive, Support Northamptonshire, working with Sean Silver and Jess Slater, presented on a voluntary sector collaborative model.</p> <p>PD presented a case study of a family that were currently being supported by Support North Northants (SNN). The family had been waiting for assistance since 2010. SNN had carried out a holistic assessment, co-ordinated and led multi-agency meetings and made decisions around the family moving properties, ASC referral and the wider support needs were identified. Have now agreed a joint plan to assist the family moving forward.</p>
<p><b>011</b></p>	<p>Close of meeting – 17:36</p>

# Local Area Partnership (LAP) Priorities August 2023

**A NEW** *sense*  
**OF PLACE**

Integrated Care  
Northamptonshire



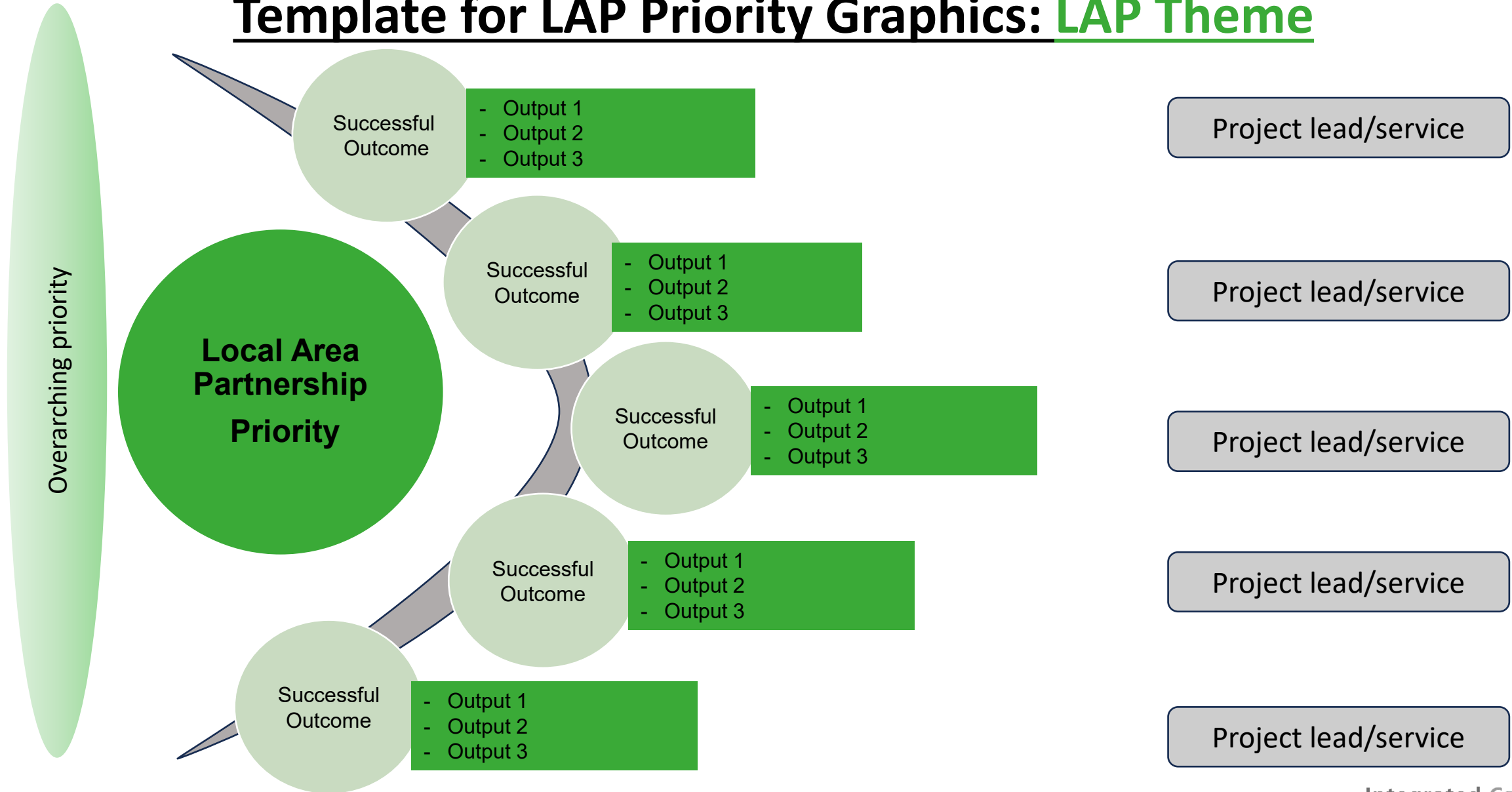
NORTH NORTHAMPTONSHIRE

[northplacedevelopment@northnorthants.gov.uk](mailto:northplacedevelopment@northnorthants.gov.uk)

# Local Area Partnerships: Summary

- The following slides have been formed using the detail on the separate action plans for each LAP
- Due to the priorities being the same, with similar outcomes, two slides have been merged
  - Wellingborough East and West
  - East Northants North and South
- This does not mean that the LAPs have been combined, but merely demonstrates a representation of the similarities across the boundaries
- The outcomes & outputs for the priorities were decided by the multi-agency task action groups, which consisted of elected members, statutory organisations and the voluntary and community sector
- There is funding available to support the groups to produce the outputs which will improve the local communities, with outputs being considered in either a 3-month or 6-month timeframe
- Asset mapping is still an ongoing process

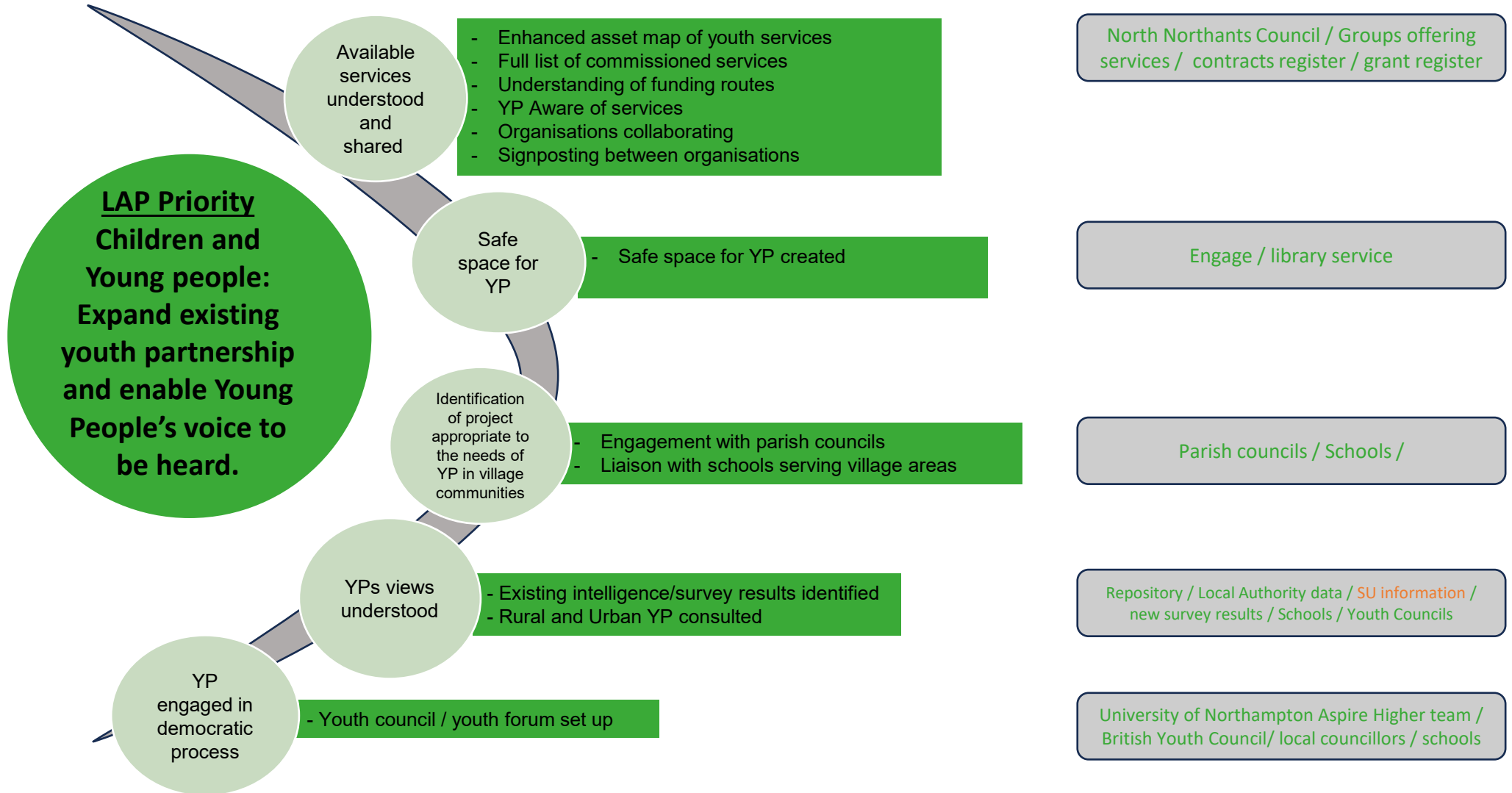
# Template for LAP Priority Graphics: **LAP Theme**



## Wellingborough East LAP & Wellingborough West LAP \*

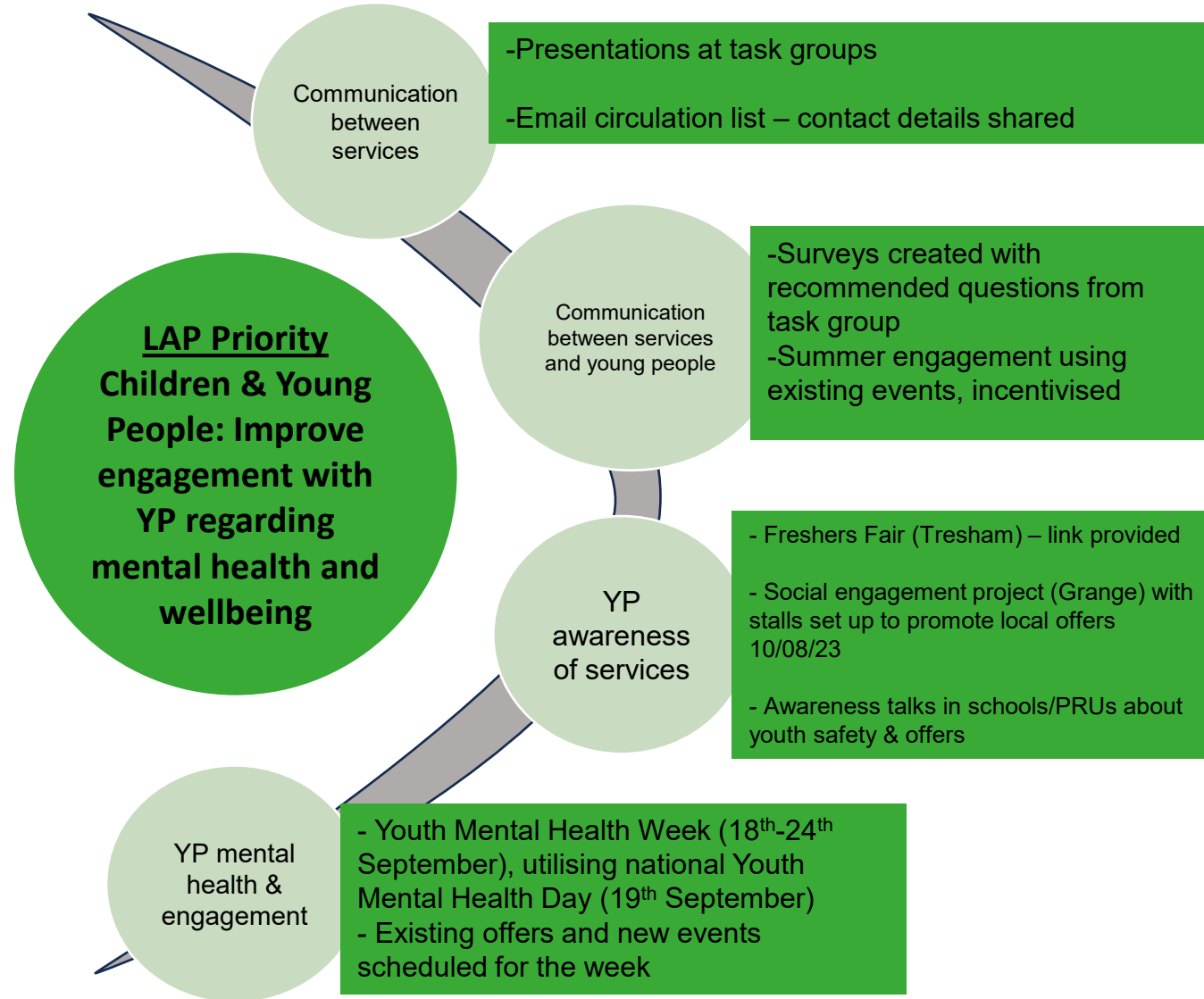
**Children and Young people: Expand existing youth partnership and enable Young People's voice to be heard**

Improving Community Health and Wellbeing



# Kettering Urban: Engagement with Young People

Improving Community Health and Wellbeing



**Lead:** North Northants Council  
**Presentations:** Police, Prospects, Gainn

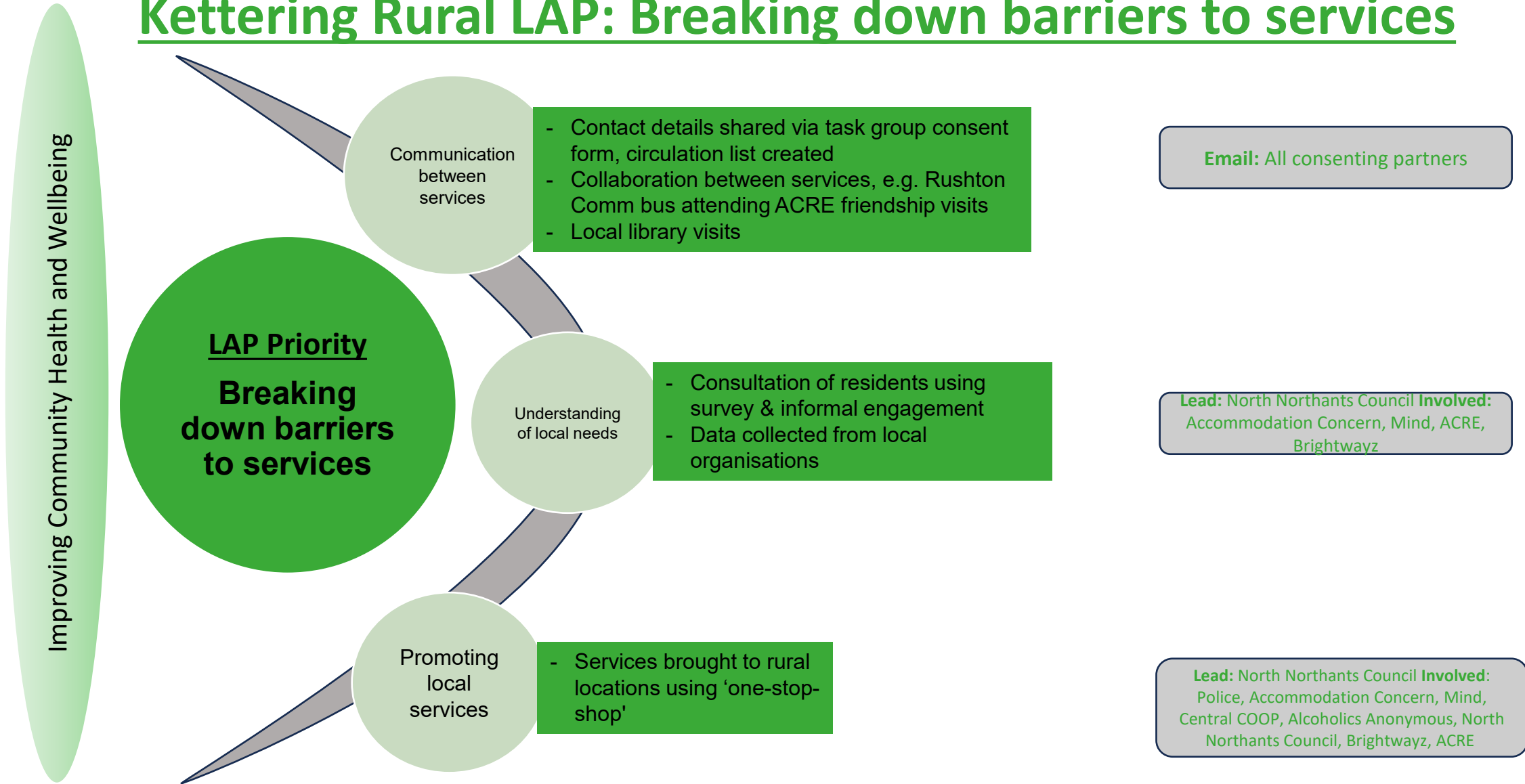
**Lead:** North Northants Council  
**Survey:** All 23 attendees invited to provide questions – Prospects to review survey and suggest incentives

**Lead:** North Northants Council  
**Engagement:** All 23 attendees invited to attend engagement

**Lead:** Well Northants  
**Involved:** Green Patch/Groundwork, Gainn, Youth Works, Central COOP, NNC, Brightwayz, Grange Resource Centre

**Lead:** North Northants Council  
**Involved:** Illicit Skate

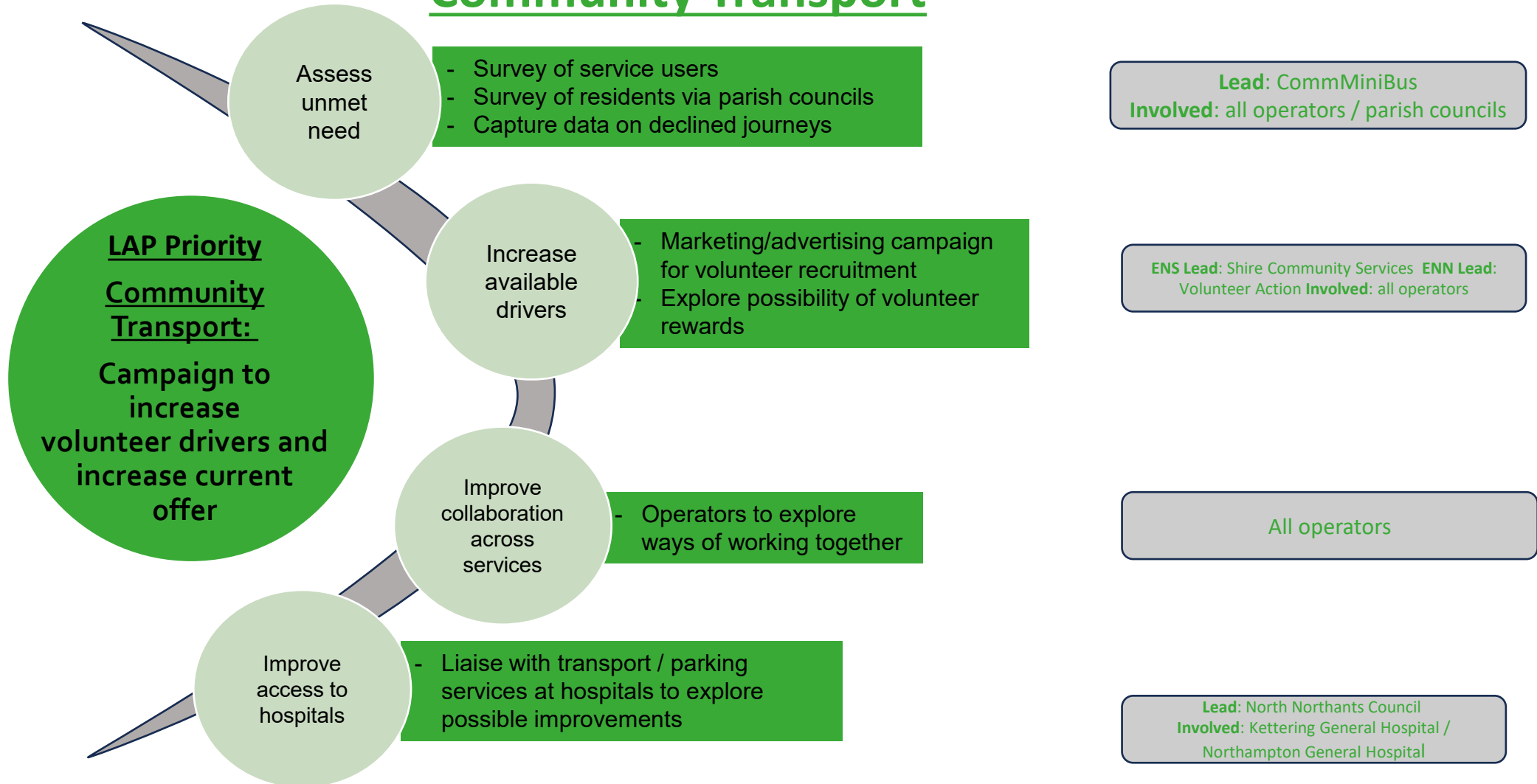
# Kettering Rural LAP: Breaking down barriers to services



# East Northants North & East Northants South LAPs

## Community Transport

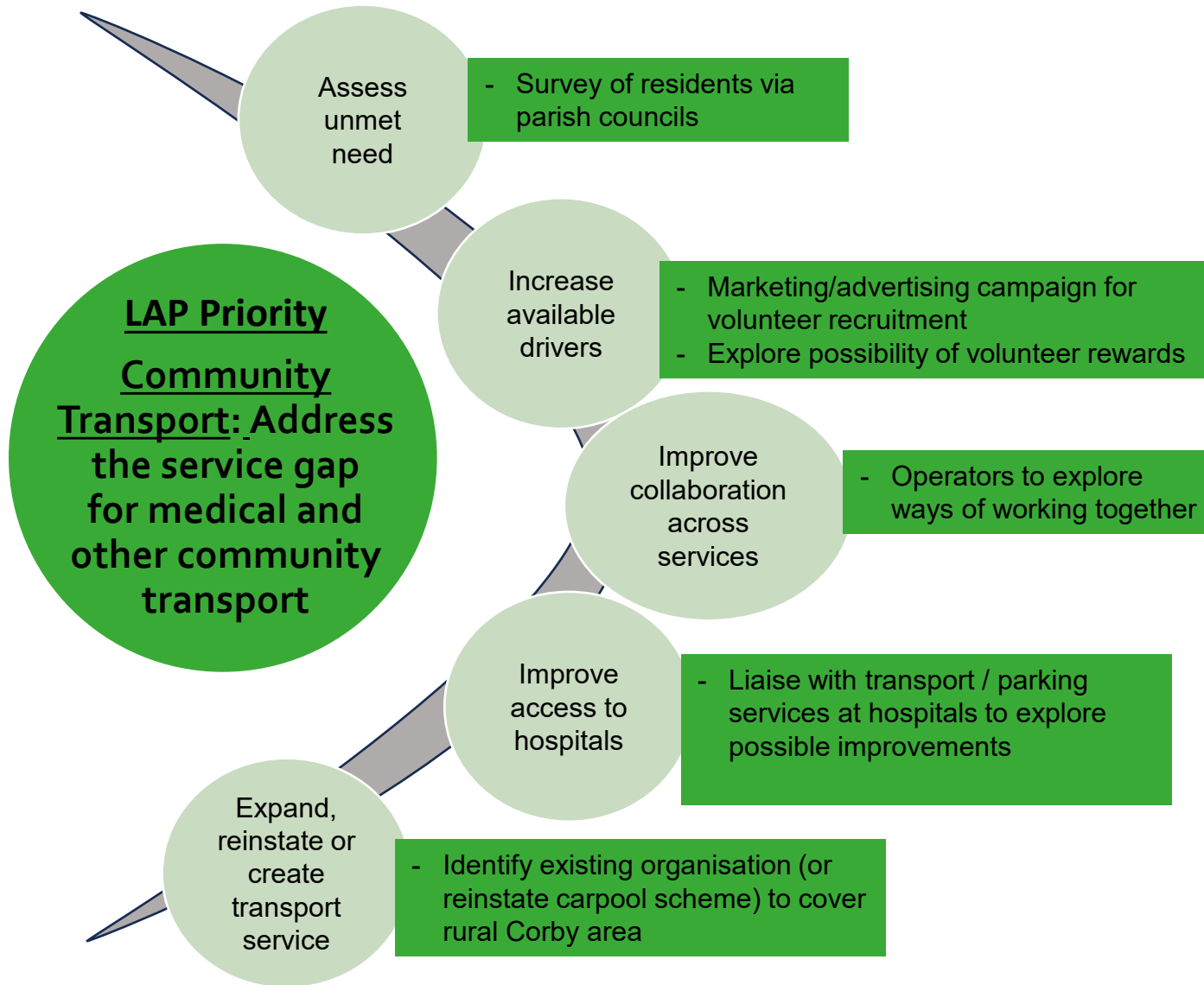
Improving Community Health and Wellbeing



\* East Northants North and East Northants South are collaborating while they have overlapping actions and organisations to avoid duplication.

# Corby: Community Transport

Improving Community Health and Wellbeing



**Lead: CommMiniBus**

**Lead: Shire Community Services**  
**Involved: all operators**

**All operators**

**Lead: North Northants Council**  
**Involved: Kettering General Hospital / Northampton General Hospital**

**Lead: TBC**  
**Involved: All operators**

# North Northamptonshire Health and Wellbeing (HWB) Strategy 2023-2028

*Draft framework for  
discussion, 24 Aug 2023*



# Aim



The aim of this slide-deck is to present a draft framework for the North Northants Health and Wellbeing (HWB) Strategy. It covers:



A range of contextual issues on which the HWB strategy is based, including the Joint Strategic Needs assessment (JSNA), the Northants *Live Your Best Life* strategy, and other strategic assessments of health and wellbeing across North Northants



The need for a robust, explicit and open prioritisation process with the engagement of key partners and stakeholders




The need to focus on a small number of key priorities, with corresponding action plans which are realistic and deliverable over the period 2023-28.



# The purpose of the HWB Strategy is to:

Provide a context, vision, and overall focus for improving the health and wellbeing of local people and reducing health inequalities.



Identify a short list of shared priorities and outcomes for improving local health and wellbeing and reducing health inequalities.



Support effective partnership working that delivers improved health outcomes.



Provide a framework to support innovative approaches which facilitate necessary change, given the shifting needs of local communities in the wake of the pandemic & the current economic climate

# Context, vision and overall focus for the North Northants HWB Strategy

Joint Strategic Needs Assessment (JSNA)

Northants Integrated Care System (ICS)  
– *Live Your Best Life*

North Northants Place Development  
Big50 vision for North Northants

Economic and Statistical Performance Assessment (ESPA) across North Northants

Stakeholder views

Ensure a consistent and seamless golden thread is running through all these overarching strategic issues

# Context, vision and overall focus for the North Northants HWB Strategy

## Joint Strategic Needs Assessment (JSNA)

Northants Integrated Care System (ICS)

– *Live Your Best Life*

North Northants Place Development

Big50 vision for North Northants

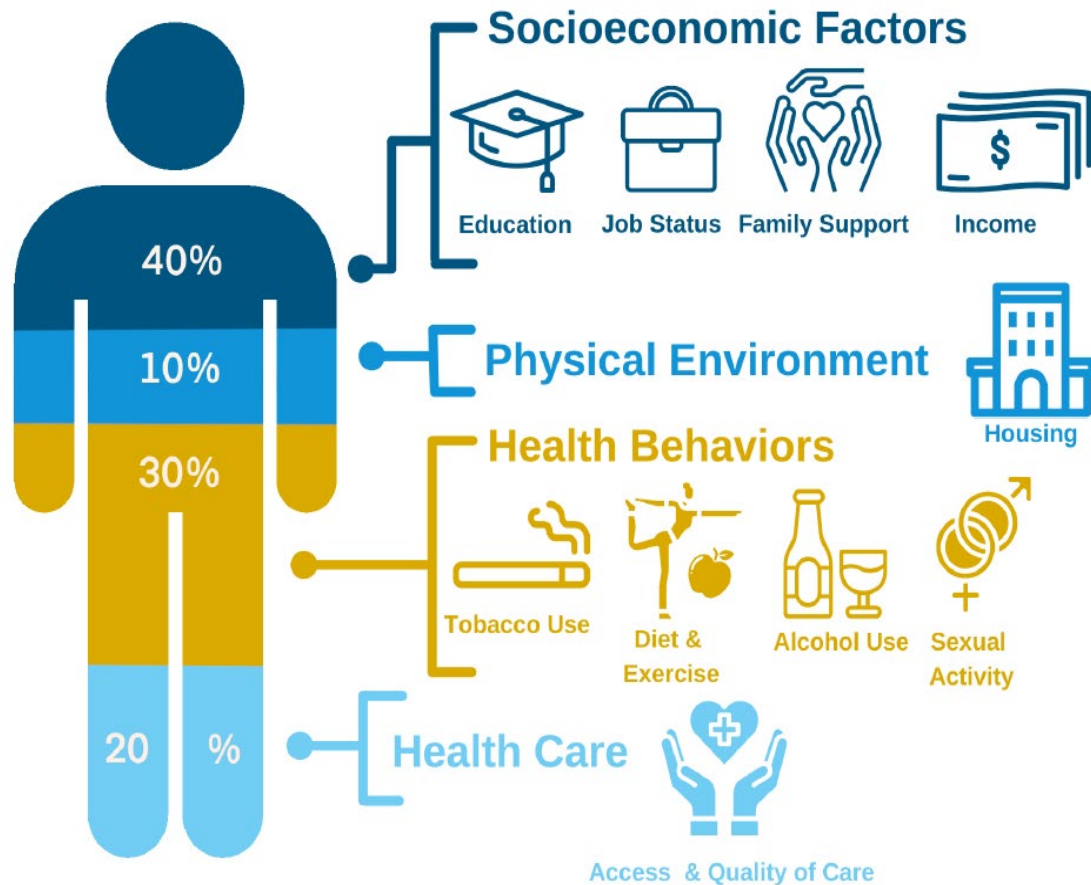
Economic and Statistical Performance Assessment (ESPA) across North Northants

Stakeholder views

JSNA is a statutory requirement of the local authority under the Health and Social Care Act 2012

# IMPACTS OF THE WIDER DETERMINANTS OF HEALTH

## *Robert Wood Johnson model*



A focus solely on healthcare provision will not solve all health problems

This requires a system, not an organisational approach.

We need a greater focus on important wider determinants because health starts - long before illness - in our homes, schools and jobs.

# Focus for the JSNA – key areas

Demography (numbers of types of people in the population)

Epidemiology (health indicators described by person, place and time)

Health and wellbeing indicators where NNC is an outlier

Health inequalities (differences between different population groups not explained by biology)

Key areas for focus in NNC

Stakeholder access to information

The JSNA will summarise the main health and wellbeing issues, which will help to prioritise the action plan

# Focus for the JSNA – public health outcomes framework

PH Outcomes framework is published nationally and includes a number of indicators where Northants is compared to regional and national averages:

- Overarching indicators
- Wider determinants of health
- Health improvement
- Health protection
- Healthcare and premature mortality

The JSNA will use the PH outcomes framework as one of its key sources

# Context, vision and overall focus for the North Northants HWB Strategy

Northants ICP priorities all taken into account in developing HWB strategy

Joint Strategic Needs Assessment (JSNA)

Northants Integrated Care System (ICS)  
– *Live Your Best Life*

North Northants Place Development

Big50 vision for North Northants

Economic and Statistical Performance Assessment (ESPA) across North Northants

Stakeholder views

*Live your best  
Life—*  
**Integrated Care  
Northants  
strategy**

## **Shared vision**

We want to work better together in Northamptonshire to create a place where people and their loved ones are active, confident and take personal responsibility to enjoy good health and wellbeing, reaching out to quality integrated support and services if and when they need help.

## **Shared ambitions**

We want the people of Northamptonshire to have:

- The best start in life
- Access to the best available education and learning
- Opportunity to be fit, well and independent
- Employment that keeps them and their families out of poverty
- Good housing in places which are clean and green
- Safety in their homes and when out and about
- Feel connected to their families and friends
- The chance for a fresh start when things go wrong
- Access to health and social care when they need it
- To be accepted and valued simply for who they are.

## **Shared aims**

- Improve the health and wellbeing of the population
- Reduce inequalities in health and wellbeing outcomes
- Ensure value for money
- Contribute to the economic and social wellbeing of Northamptonshire.

# Northamptonshire Integrated Care System

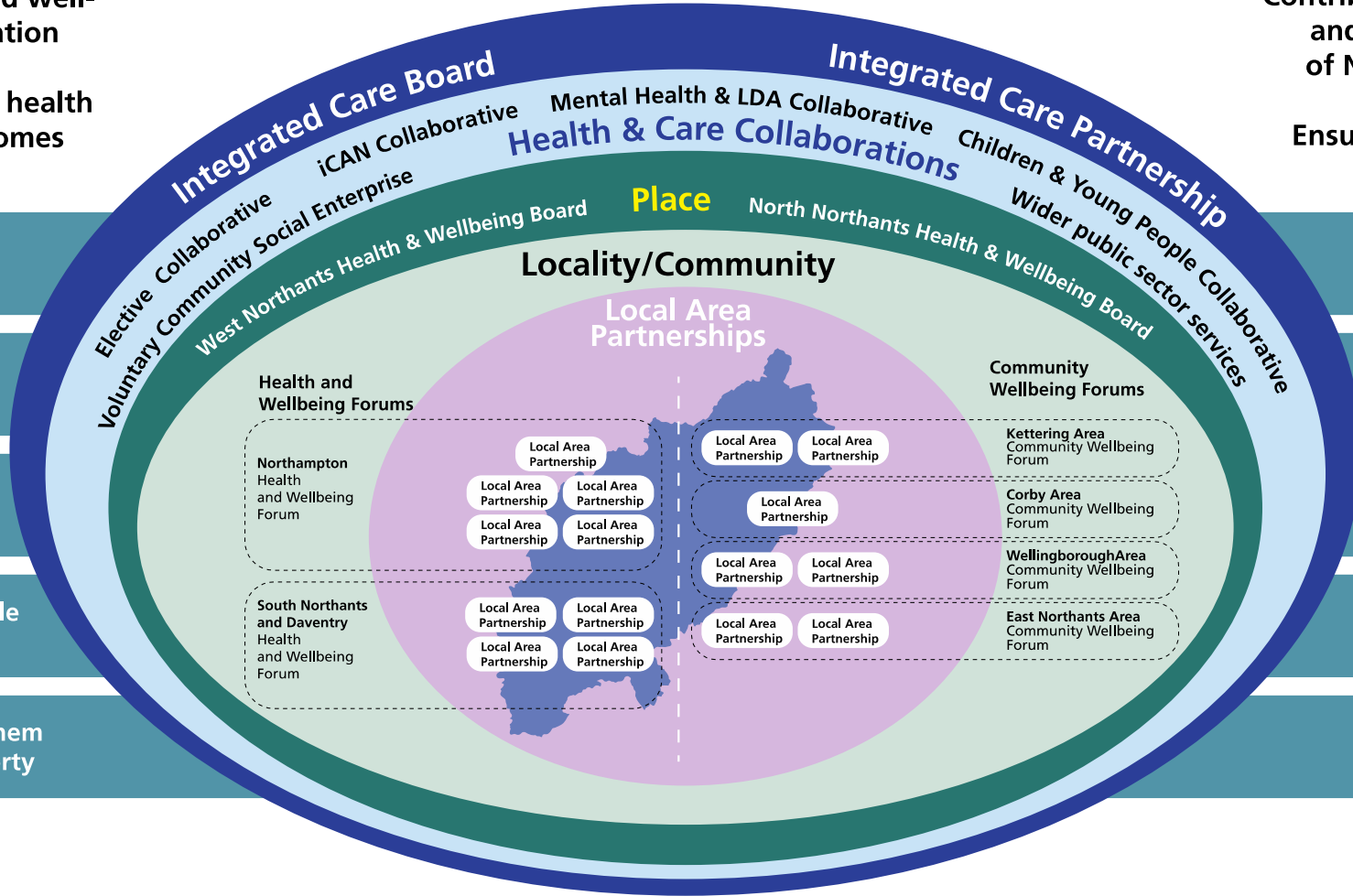
Improve the health and well-being of the population

Reduce inequalities in health and wellbeing outcomes

Contribute to the economic and social wellbeing of Northamptonshire

Ensure value for money

- Access to health & social care when needed
- Opportunity to be fit & well
- Best start in life
- Access to the best available education & learning
- Employment that keeps them & their family out of poverty



Good housing in places which are clean and green

To feel safe in their homes & when out and about

Connected to their families

To be accepted & valued simply for who they are

Access to health & social care when needed

# Context, vision and overall focus for the North Northants HWB Strategy

Joint Strategic Needs Assessment (JSNA)

Northants Integrated Care System (ICS)  
– *Live Your Best Life*

**North Northants Place Development**

Big50 vision for North Northants

Economic and Statistical Performance Assessment (ESPA) across North Northants

Stakeholder views

*A New Sense of Place* is now an integral part of the North Northants landscape

# Places

West Northants

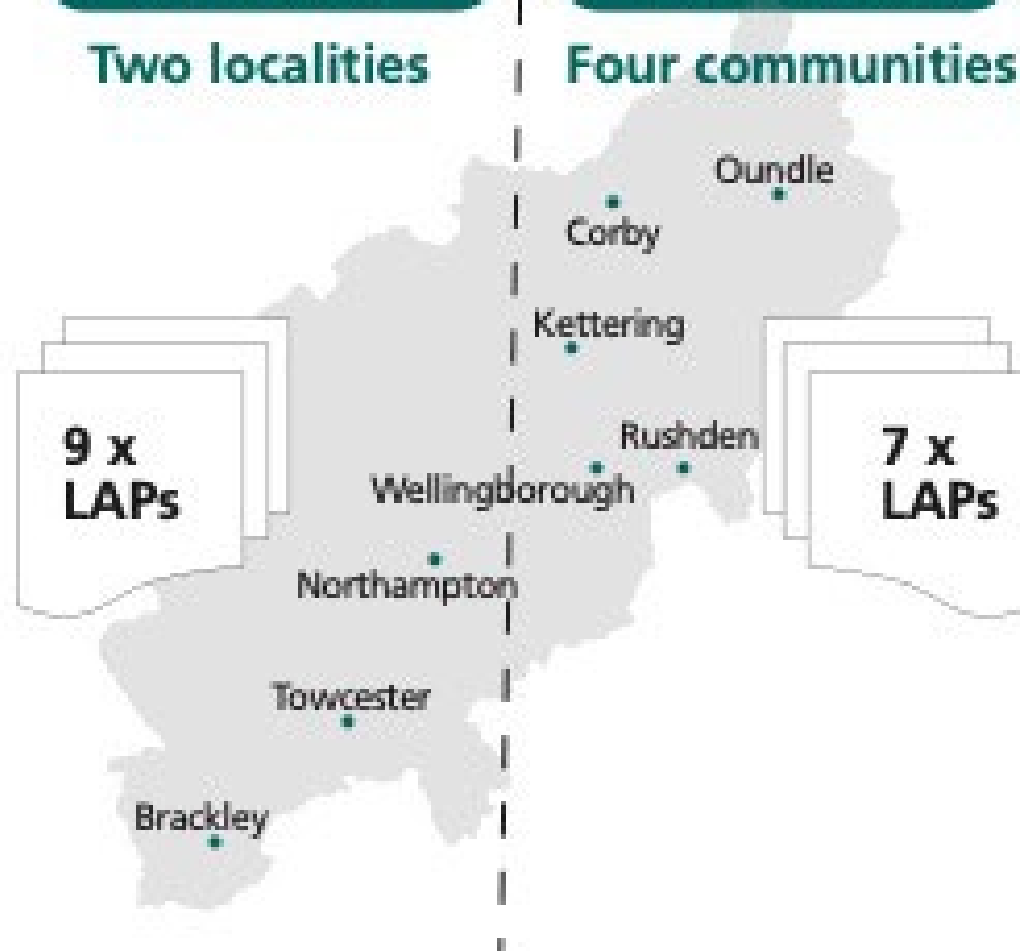
North Northants

Localities

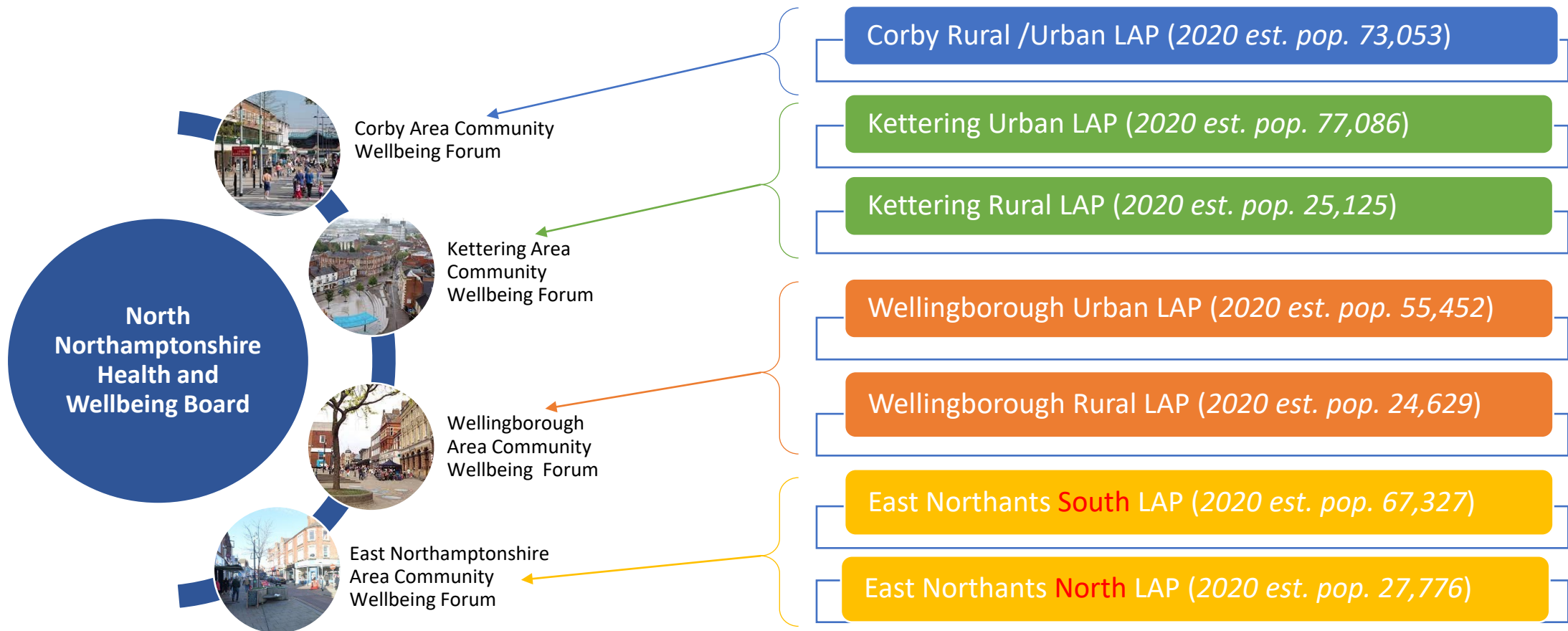
Communities

Two localities

Four communities



# Area Community Wellbeing Forums Local Area Partnerships



# Context, vision and overall focus for the North Northants HWB Strategy

Joint Strategic Needs Assessment (JSNA)

Northants Integrated Care System (ICS)  
– *Live Your Best Life*

North Northants Place Development

**Big50 vision for North Northants**

Economic and Statistical Performance Assessment (ESPA) across North Northants

Stakeholder views

Big50 refers to the vision for North Northants for the year 2050

# Vision for 2050

*the best life for all in North Northamptonshire*

3 key priorities

- A proud place
- A prosperous place
- A proactive place

# Context, vision and overall focus for the North Northants HWB Strategy

Joint Strategic Needs Assessment (JSNA)

Northants Integrated Care System (ICS)  
– *Live Your Best Life*

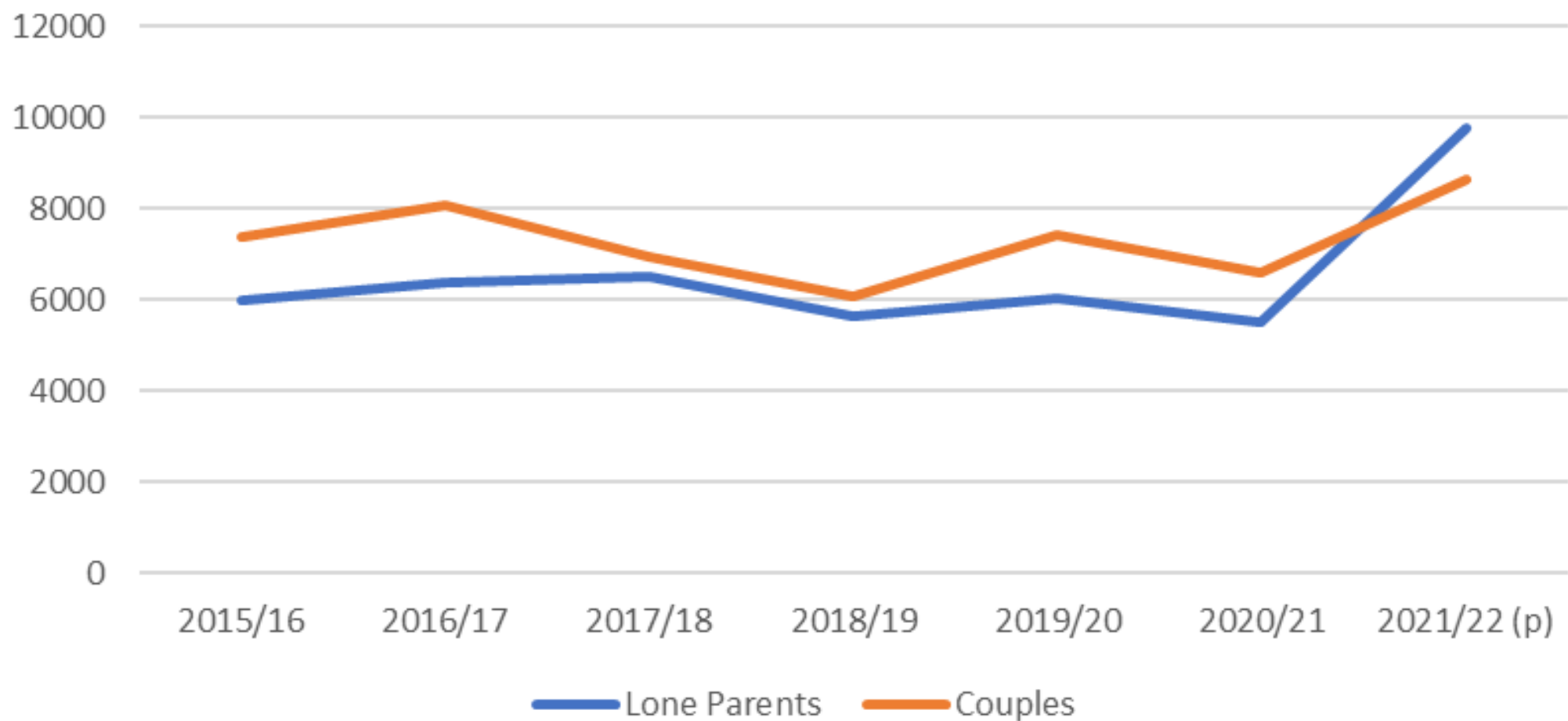
North Northants Place Development  
Big50 vision for North Northants

**Economic and Statistical Performance Assessment (ESPA) across North Northants**

Stakeholder views

A number of economic indicators across NNC are going in the wrong direction

## North Northamptonshire Children in Low Income Families (Relative Low Income)



Over time, North Northamptonshire has consistently shown resident employment rates higher than the England average rising dramatically to a peak in the early months of the pandemic when North Northants had the highest employment rate amongst the basket of economic comparators (Y2End Jun-20). Since then, however, the employment rate has decreased and for the period Y2End Mar-22 fell below the England average for the first time. Performing worse over the last two years than most of the economic comparators the authority is now ranked 15<sup>th</sup> out of 16.

# Context, vision and overall focus for the North Northants HWB Strategy

Joint Strategic Needs Assessment (JSNA)

Northants Integrated Care System (ICS)  
– *Live Your Best Life*

North Northants Place Development  
Big50 vision for North Northants

Economic and Statistical Performance Assessment (ESPA) across North Northants

**Stakeholder views**

Discussions with CWFs and LAPs to be summarised here

# Aim



The aim of this slide-deck is to present a draft framework for the North Northants Health and Wellbeing (HWB) Strategy. It covers:



A range of contextual issues on which the HWB strategy is based, including the Joint Strategic Needs assessment (JSNA), the Northants ICS strategy, and other strategic assessments of health and wellbeing across North Northants



→ The need for a robust, explicit and open prioritisation process with the engagement of key partners and stakeholders



The need to focus on a small number of key priorities, with corresponding action plans which are realistic and deliverable over the period 2023-28.



# Prioritisation process in conjunction with key partners

North Northants Council (elected  
members and officers)

Integrated Care Board/Partnership

Local health and wellbeing providers

Community Wellbeing Forums

Local Area partnerships

Voluntary groups

All views to be taken into account  
when deciding priorities

# Most Frequent themes stated by leaders

Socio-economic	Services, support and care	Behaviours	Environment
Cost of living and poverty	Addressing widening inequalities	Intersectionality	Travel and transport
Low-income groups	Access to high quality, co-produced services run by well-trained workforce	Deprivation	Access to facilities
Poor housing	Support for healthy ageing	Multiple poor behaviours	Green space access
Benefits access and debt	Parity for social care	Proportionality	Infrastructure
Education including post-16 provision	Support for self-care/access to advice/health literacy	Mental health is a theme throughout	Sustainability agenda and climate impacts
Work, health and prosperity	Multiple health issues	Personal and social influences on behaviours	Impacts of housing on health
Young people's wellbeing – mental health, ACEs, wellbeing needs, child poverty	Support in early years	Food insecurity and healthy eating	Connected communities & places.
Family support	Lived experiences and user opinions	Targeting specific groups and communities	Using assets in communities

# Potential Priorities

- Most agreed that the wider determinants of health were the key to promoting health and wellbeing and that is where the NJHWS should centre action.
- Cost of living and economic disadvantage: poverty, low income, and deprivation.
- Poverty of aspiration and the power of education
- Health behaviours
- Upstream vs downstream thinking
- Infrastructure and environment for health
- Needs of seldom heard and marginalised groups
- Public mental health
- Public Access and health literacy
- Joining up strategies and reflections on improving system working

## ❑ **Strategy should have a primary focus on:**

- Limited number of priorities
- The wider determinants and wicked problems
- Working upstream, prevention and early help,
- Addressing inequalities,
- Community voice in “everything we do”, and community connectedness
- Recognising the rural /urban and local community needs

## ❑ **HWB Board function to support oversight of strategy development and delivery**

# Aim



The aim of this slide-deck is to present a draft framework for the North Northants Health and Wellbeing (HWB) Strategy. It covers:



A range of contextual issues on which the HWB strategy is based, including the Joint Strategic Needs assessment (JSNA), the Northants ICS strategy, and other strategic assessments of health and wellbeing across North Northants



The need for a robust, explicit and open prioritisation process with the engagement of key partners and stakeholders



→ The need to focus on a small number of key priorities, with corresponding action plans which are realistic and deliverable over the period 2023-28.



# Key priorities, with realistic implementation plans over the period 2023-28

Children and Young people  
Mental Health and wellbeing  
Keeping active  
Economic prosperity

*Possible key priorities for discussion*

Try to keep to 4-5 key areas to ensure action plans are a success

# Key priorities, with realistic implementation plans over the period 2023-28

Try and avoid focus where there is already significant effort

## Children and Young people

- Key area from JSNA, ICP, local stakeholder views and Big50
- Already huge amount of work in this area, so avoid duplication
- ? Focus on 0-3s
- ? Focus on children in care
- ? Focus on substance misuse
- ? Other area

# Key priorities, with realistic implementation plans over the period 2023-28

Try and avoid focus where there is already significant effort

## Mental health and wellbeing

- Key area from JSNA, ICB strategy, place, Big50
- Already huge amount of work in this area, so avoid duplication
- ? Focus on teenage anxiety
- ? Focus on loneliness in older people
- ? Focus on people calling emergency services (eg police)
- ? Other area

# Key priorities, with realistic implementation plans over the period 2023-28

Try and avoid focus where there is already significant effort

## Keeping active

- Key area from JSNA, Big50, local stakeholder views
- Already huge amount of work in this area, so avoid duplication
- ? Focus on active travel
- ? Focus on active old age
- ? Focus on use of outdoor spaces
- ? Other area

# Key priorities, with realistic implementation plans over the period 2023-28

Try and avoid focus where there is already significant effort

## Economic activity

- Key area from Big50, local stakeholder views, Integrated care partnership, ESPA
- Proportion of those economically active gone down in last few years
- ? Focus on occupational health
- ? Focus on 16-24 year olds; apprenticeships
- ? Focus on generational worklessness
- ? Other area

# Summary



The aim of this slide-deck has been to present a draft framework for the North Northants Health and Wellbeing (HWB) Strategy. It covered:



A range of contextual issues on which the HWB strategy will be based, including the Joint Strategic Needs assessment (JSNA), the Northants *Live Your Best Life* strategy, and other strategic assessments of health and wellbeing across North Northants



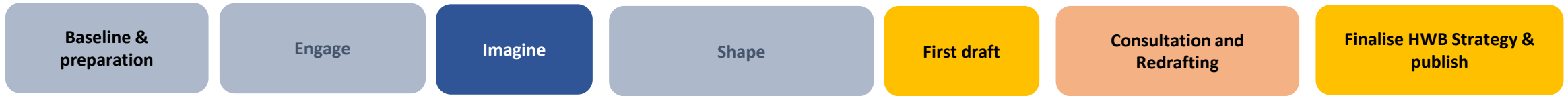
The need for a robust, explicit and open prioritisation process with the engagement of key partners and stakeholders



The need to focus on a small number of key priorities, with corresponding action plans which are realistic and deliverable over the period 2023-28.



# Project timeline & next steps



[May - June]

July

August

September

October

November

December

January

February

- **Review** health and wellbeing intelligence & insights
- Review relevant reports and strategies
- Look at what LAP data is suggesting about priorities / theme
- Establish **governance for HWB Board**
- Attend key groups to increase awareness and ownership of JHWS project and gain feedback
- Agree **overall approach** with HWB Development group and North Place Delivery Board

- **Conduct interviews** with key players in system (issues/priorities).
- Attend CWFs to discuss JHWS
- Hold **insight sessions** with partner and stakeholder groups to explore issues/needs/priorities
- **Construct report** that summarises engagement so far for North Place Delivery Board and HWB Board: should include structure of strategy, priorities, identified and cross-cutting themes highlighted

**HWB Board and Stakeholder Workshops** to explore relevant JSNA findings, insight sessions and agree priorities, approach, cross cutting themes and plan of action to see where we can make the most effective impact on health outcomes.

HWB Board receive first draft  
Consult – (Road show approach)  
Attend CWFs and LAPs to engage places

Final draft of HWB Strategy brought to HWB Board in January 2024

**Publish HWB strategy**

<b>Meeting:</b>	<b>Community Wellbeing Forum</b>
<b>Date:</b>	
<b>Time:</b>	
<b>Venue:</b>	

Item		Verbal/ Paper Presentation	Subject	Lead
01	30 Minutes		Registration and Partnership Networking	All
02	2 Minutes	Verbal	Welcome and Apologies	Chair
03	3 Minutes	Paper (Action log)	Actions from previous meeting held <b>xxx</b>	Chair
04	20 Minutes	Verbal	Invited Agency updates relevant to LAP topics (2 minute update/presentation) <ul style="list-style-type: none"> <li>• Key priorities</li> <li>• Current workstreams</li> <li>• Collaborative opportunities</li> </ul>	
05	20 Minutes	Papers (LAP Presentation Update Slide, LAP Action Plans, LAP Task Group Data Slides)	LAP 1 update <ul style="list-style-type: none"> <li>• 3-6 Month Delivery Plan</li> <li>• Task &amp; Finish</li> <li>• Intelligence updates</li> <li>• Actions &amp; Outcomes</li> </ul>	LAP Coordinator
06	20 Minutes	Papers (LAP Presentation Update Slide, LAP Action Plans, LAP Task Group Data Slides)	LAP 2 update <ul style="list-style-type: none"> <li>• 3-6 Month Delivery Plan</li> <li>• Task &amp; Finish</li> <li>• Intelligence updates</li> <li>• Actions &amp; Outcomes</li> </ul>	LAP Coordinator
07	20 Minutes	Verbal/Papers (LAP Funded Activity Log)	Governance and Funding <ul style="list-style-type: none"> <li>• Role of LAP and CWF</li> <li>• What additional support and leverage can CWF provide for localised need</li> <li>• Update on existing funded activities and Governance</li> <li>• Match funding and additional opportunities</li> </ul>	LAP Coordinator/Chair

<b>08</b>	10 minutes	Verbal/Papers (Theme Matrix)	LAP Priority Actions <ul style="list-style-type: none"> <li>• Review of the original Matrix of priority themes</li> <li>• Next theme discussion</li> </ul>	
<b>09</b>	10 Minutes	Papers (GIS Links, Insight Hub Update report, LAP Survey Update)	Asset Mapping & Engagement Insight Hub <ul style="list-style-type: none"> <li>• Asset Map GIS walk-through</li> <li>• Insight Hub update</li> <li>• Next Steps</li> </ul>	Chair/Nathan Isom/James Gillespie-Allan/LAP Coordinator
<b>010</b>	5 Minutes	Verbal	PLACE Communications <ul style="list-style-type: none"> <li>• Update on Place Communications</li> </ul>	Ali Gilbert/Comms
<b>011</b>	5 Minutes	Verbal	Next Steps, AOB, and Agency Identified for next meeting updates	Chair

DRAFT

# VCSE ICS North Northants Engagement

Item 6a



VCSE Leadership in the North has been led by the Infrastructure organisations: Groundwork Northants, Serve, Support Northants and supported by Accommodation Concern and more recently by The VCSE Assembly.

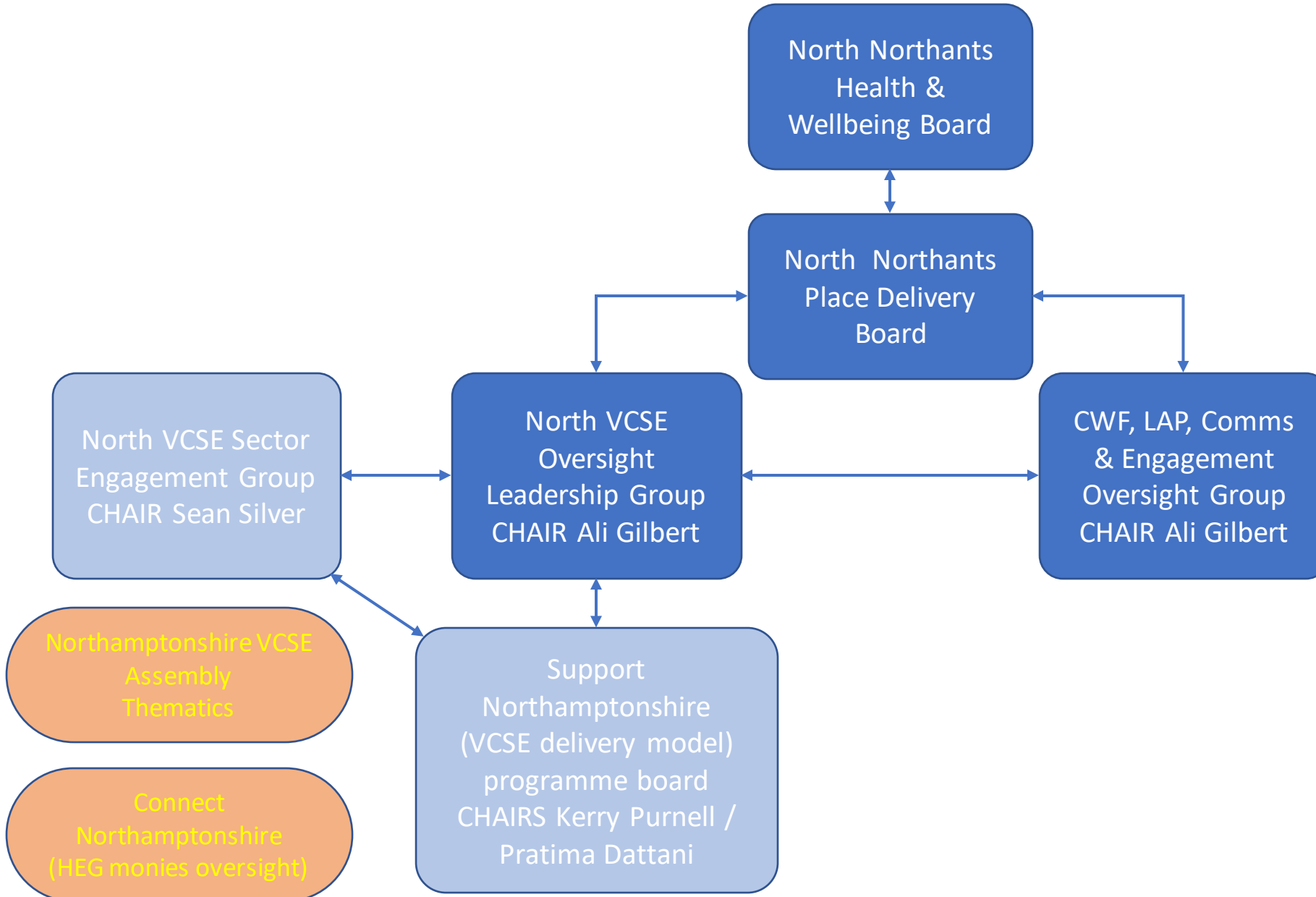
The North Northants VCSE ICS Engagement Group is well established and is offered to the sector as the place for a more in-depth and supportive discussion on the ICS in North Northants. The wider sector is informed via our extensive networks.

Membership is drawn from across the North Northants Infrastructure networks, and open to all VCSE groups and has a membership of 45 VCSE organisations.

The Engagement Group is the place where VCSE representation is elected/nominated to any places/bodies where VCSE representation is required across NN (including Delivery Board, Health & Wellbeing Board, Integrated Care Board, CWF Chairs and VCSE reps to CWFs etc).

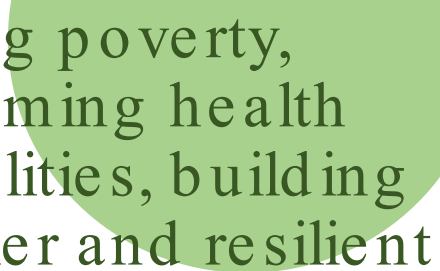
Monthly meetings focus on feedback from the various ICS meetings attended and the SNN programme and updates have included from the VCSE Collaboratives.

# North Place Development Programme Governance





# Support North Northants (SNN)



Tackling poverty,  
overcoming health  
inequalities, building  
healthier and resilient  
communities

A collaborative service model with the Voluntary, Community, Social Enterprise (VCSE) sector and other agencies to provide early intervention and prevention, guide people to the right service/pathways quickly and build greater levels of community resilience. This service aims to provide sustainable prevention services that can withstand any future shock such as Covid 19.



‘Don’t give up on people’ and ‘catch people early’

## Defining the challenges

Fragmented system from a resident's service user perspective

For the service user very difficult to navigate pathways – too long, too cumbersome.

Rising demand for statutory services = access thresholds increase; & the opportunity to deliver population wellbeing, prevention and early help by those services is reduced

More people are struggling due to impact of COVID, including Long Covid, the cost-of-living crisis, increased health inequalities.

Plethora of front doors and access points for both statutory and VCSE services – NO HOLISTIC Single Point of Access

Social prescribing model struggles to access VCSE offer due to VCSE capacity or not understanding what the local offer is.

VCSE funding and capacity – often reliant on siloed external, restricted funding so not able to respond to system-wide local needs collectively.

Services don't always consider the person's holistic needs, focus only on their services, and look to other services through repeated cycle of handoffs, signposting, refer, assess, close case.

There is duplication of services and inappropriate referrals

## Defining the challenges, continued

How can different points of access work together and how can this model provide a professional joined-up service with VCSE Co-ordination?

Staff are not always aware of what different services do and don't do

Need to ensure more information is shared at earliest opportunity so that staff have the whole picture and not just a pixel

Commissioning and service design can be fragmented and done on a service perspective rather than on a person-centred and place/population approach

Previous VCSE work has not been system-wide, so need to deliver system wide action research programme at pace and scale.

Need to build community resilience so that future community wrap around support for individuals and households is proactive (E.g., a pandemic or crisis response can be better managed and coordinated)

Improve ability to offer tools for independence, self help, informal networks of support, access to information and advice and opportunities to contribute.

Need a whole system, evidence based, case model to help deliver against the 10 Live Your Best Life outcomes

## A Culture Shift

'We don't give up on people'

'Catch people early'

'Person-centred and strengths-based support'

'Outcomes Focussed'

'Build personal and community resilience'

'Help people to help themselves'

'Effective use of public and community assets,  
skills, talents, resources'

### Public value

is the total value we create for the public using our resources, assets, skills, experience and looking beyond ourselves or organisations.

### Co-production

service users and co-production – sharing power

### Working across boundaries

seamless, integrated and One Team, maximising the team around our people (case co-ordination)

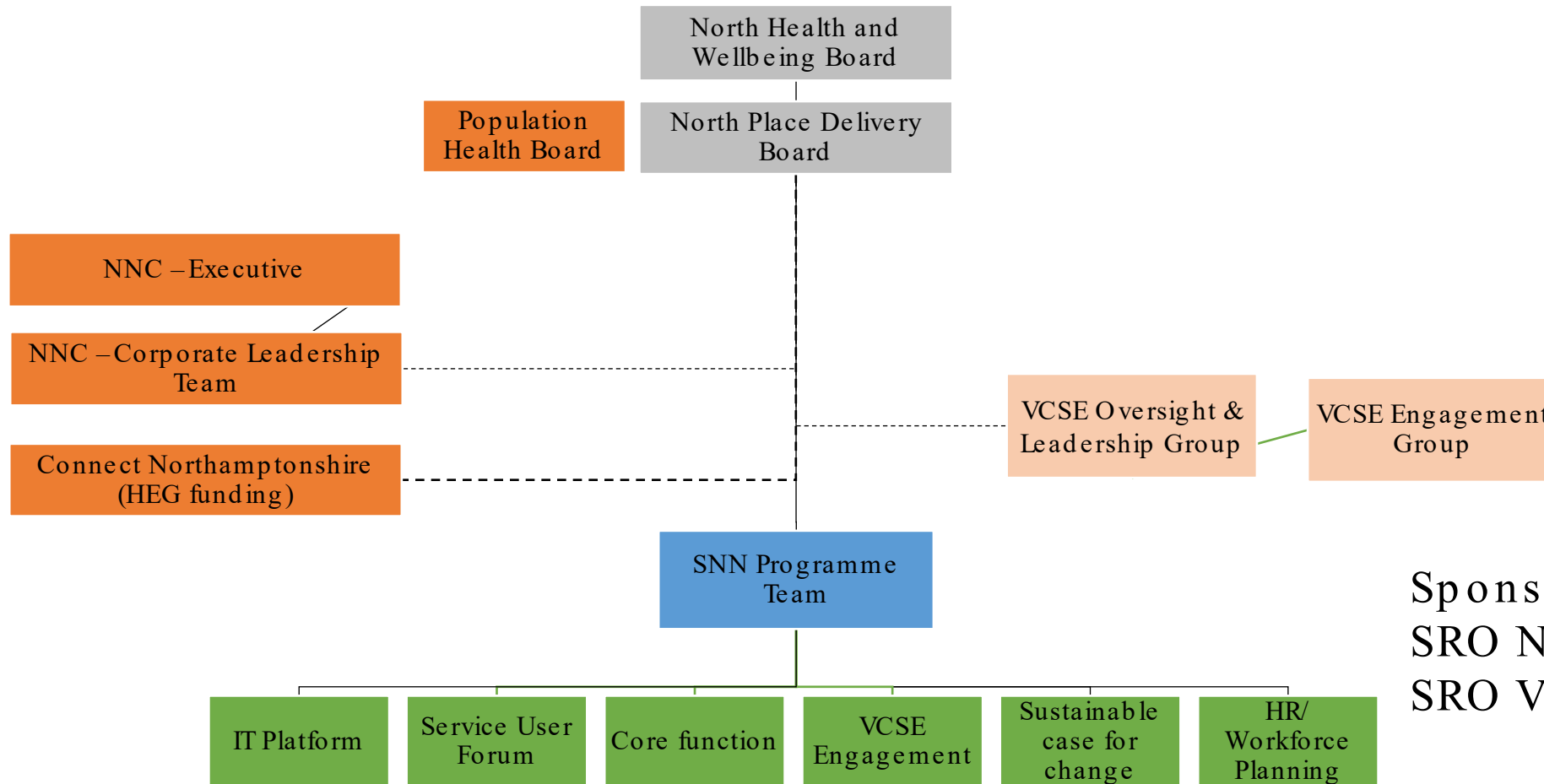
### High level of collaboration

use the best expertise of partners

### System Leadership

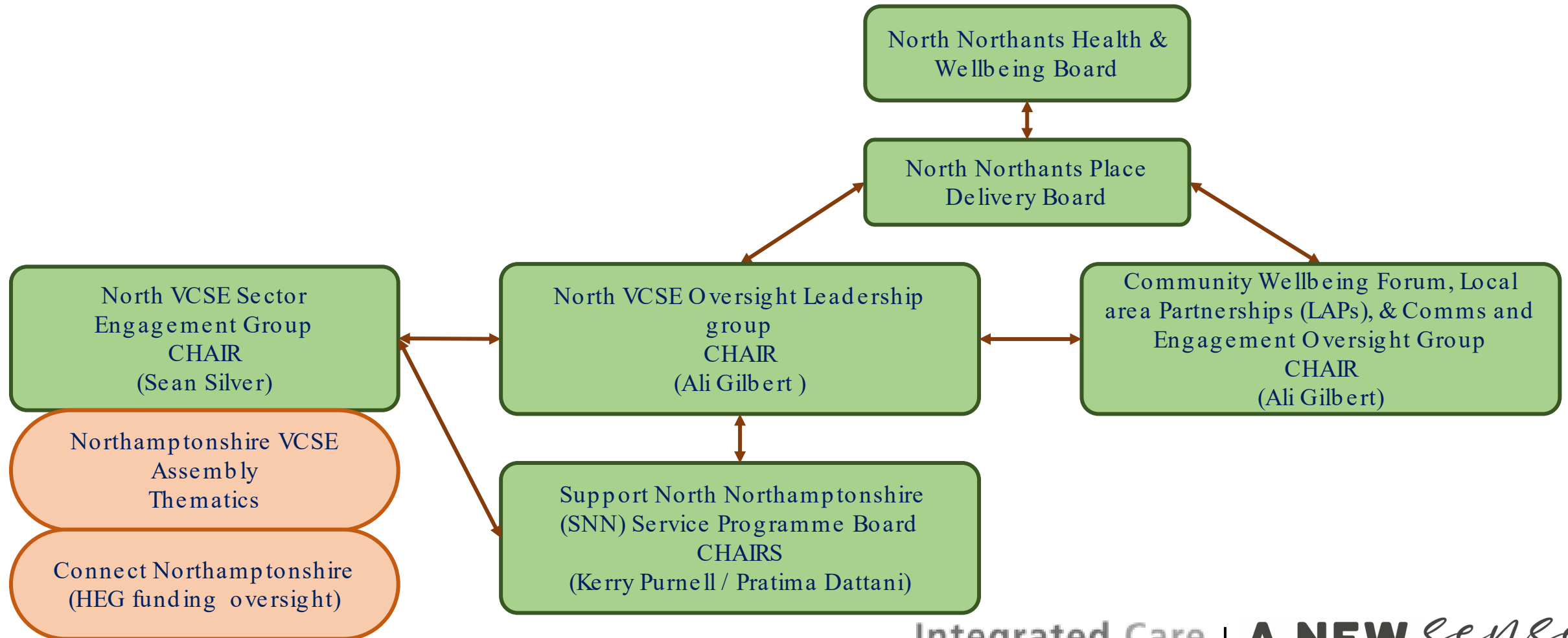
collective responsibility to tackle the barriers and lead cultural change

## Governance



Sponsor: David Watts  
SRO NNC: Kerry Purnell  
SRO VCSE: Pratima Dattani

## North Place Development Programme Governance



No door is a wrong door

# Support North Northants

Co-designed with people, whole system approach

**SNN POINT OF ACCESS**  
1 phone number/online

The person



Person-centred conversation  
1-2 days



Information & Support

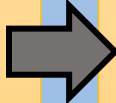


Close

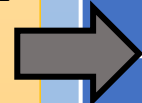
CATCH Team



Other partners involved & who will contribute identified



Weekly collaboration meeting between VCSE & statutory partners



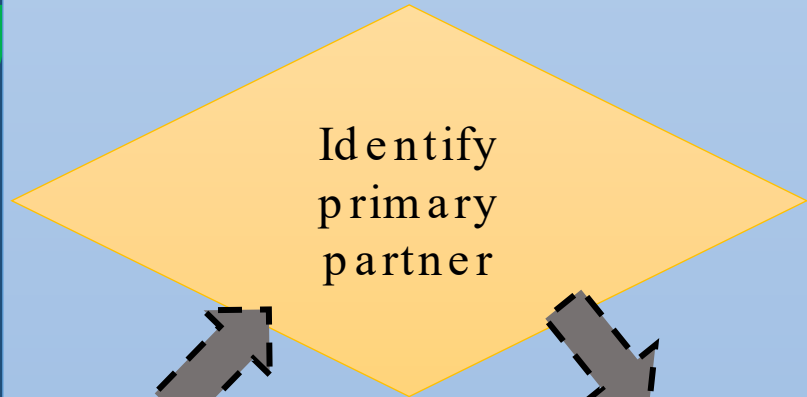
REVIEW in 3 months

Agreement to continue support



SERVICE USER FEEDBACK

**CATCH TEAM**



**SUPPORT PLAN**

(Person centred, strengths based and outcomes focussed)  
3-6 months



Closure in 3 months

Outcomes achieved

Time taken measured

Develop case studies

Pathways to other Support & Services

Align with existing Services- Identify system efficiencies

Build personal & community resilience & connections

Building Resilience and Networks of Support (Wider VCSE partners)

## Benefits



### BENEFITS FOR NORTH PLACE AND PARTNERS

- ✓ Evidence-based prevention & earlier interventions
- ✓ Real time shared information about people to support interventions
- ✓ We get more done, quicker and better together
- ✓ Improved understanding of community assets, service offer & needs assessments at local level to inform LAP priorities
- ✓ Better, more efficient use of resources and funding, Value for Money
- ✓ Sustainable capacity in the VCSE to meet local needs e.g. social prescribing
- ✓ Improved collaboration; organisations & partners 'working across boundaries' as ONE TEAM
- ✓ Measure journey travelled for people, time taken, resilience and contribution to strategic outcomes
- ✓ Empower front line staff and unlock their potential
- ✓ Transformation in real terms

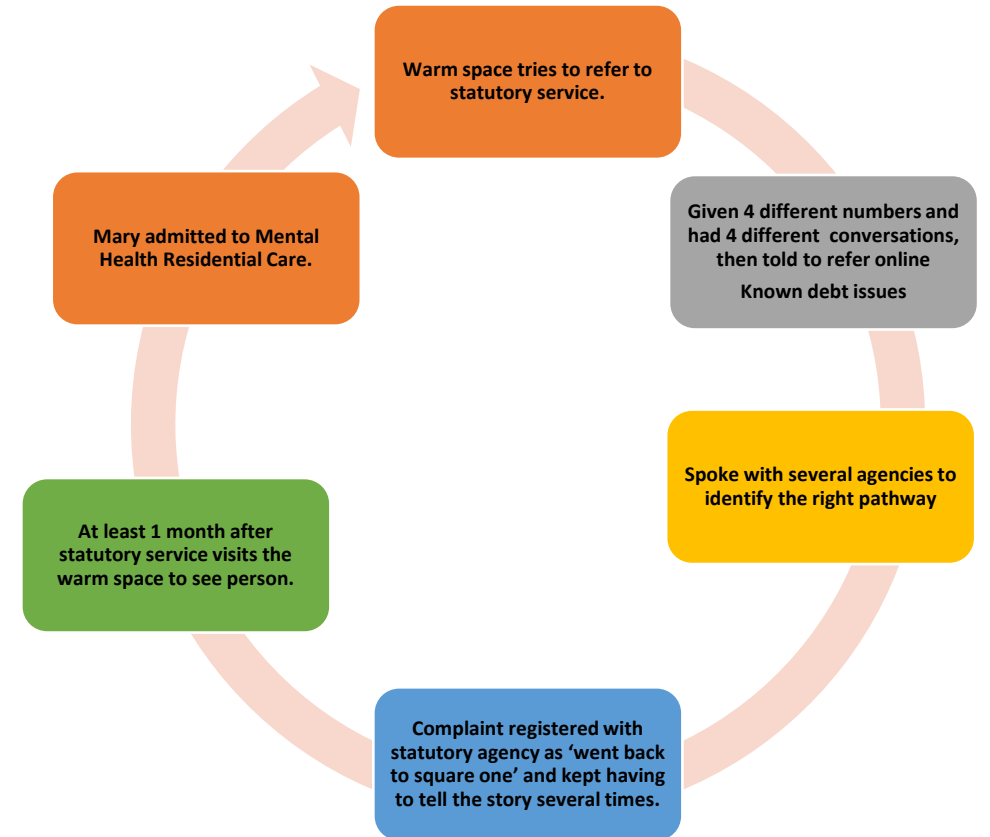
## Mary's Story - Before



No Single Point of Access or obvious pathway

- A young woman with existing diagnosed mental health needs attended the Warm Space at a Community Centre for over a year
- Increasing concerns by staff about her mental health – This person's needs were increasing, making her a risk to herself and others; she wasn't getting the level of ongoing support from the statutory service that she needed at that time.
- Staff and volunteers saw her 4 times to get to know her and understand her needs and think about what to do. STUCK

A VCSE Partner attempts to support

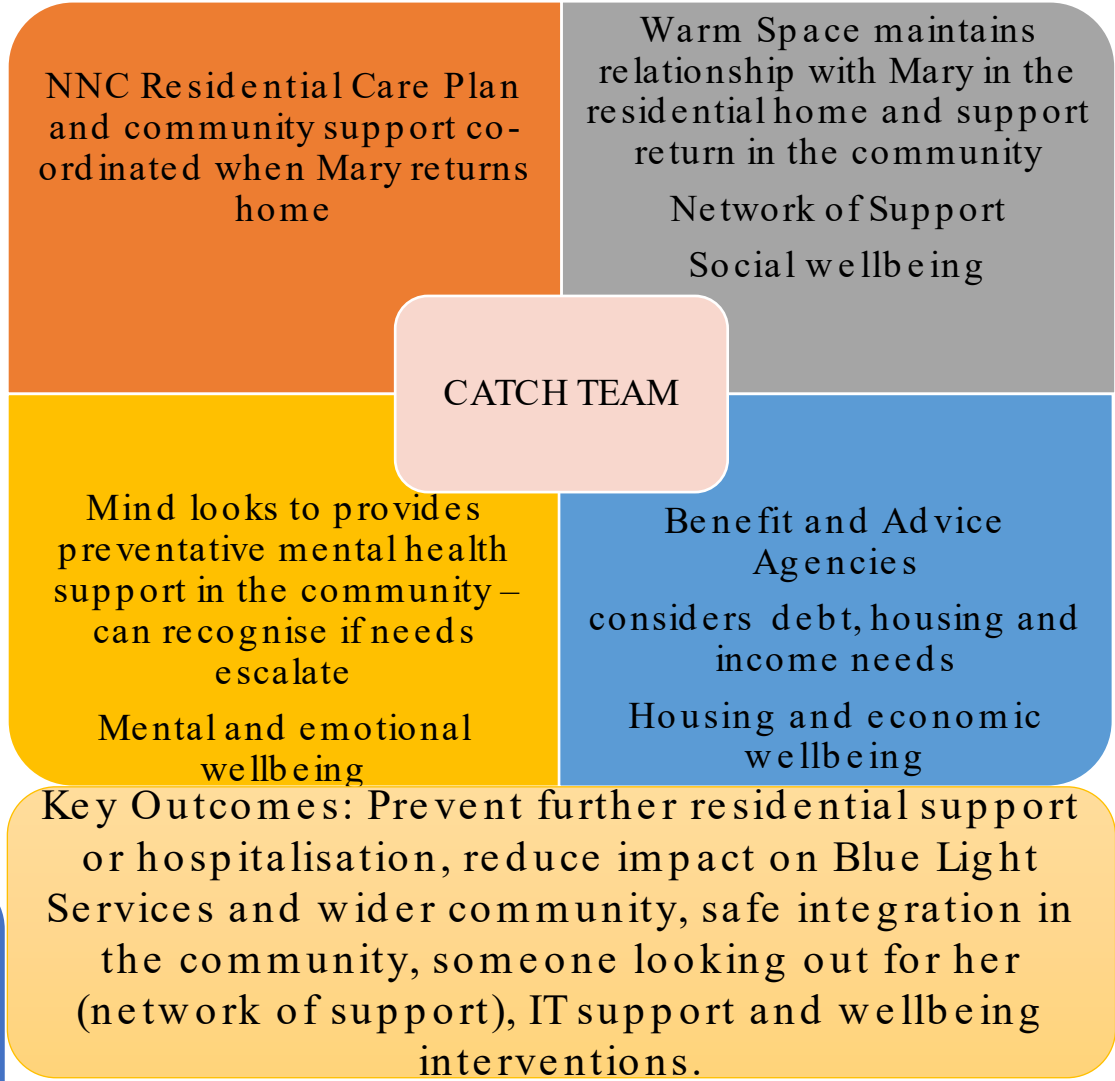
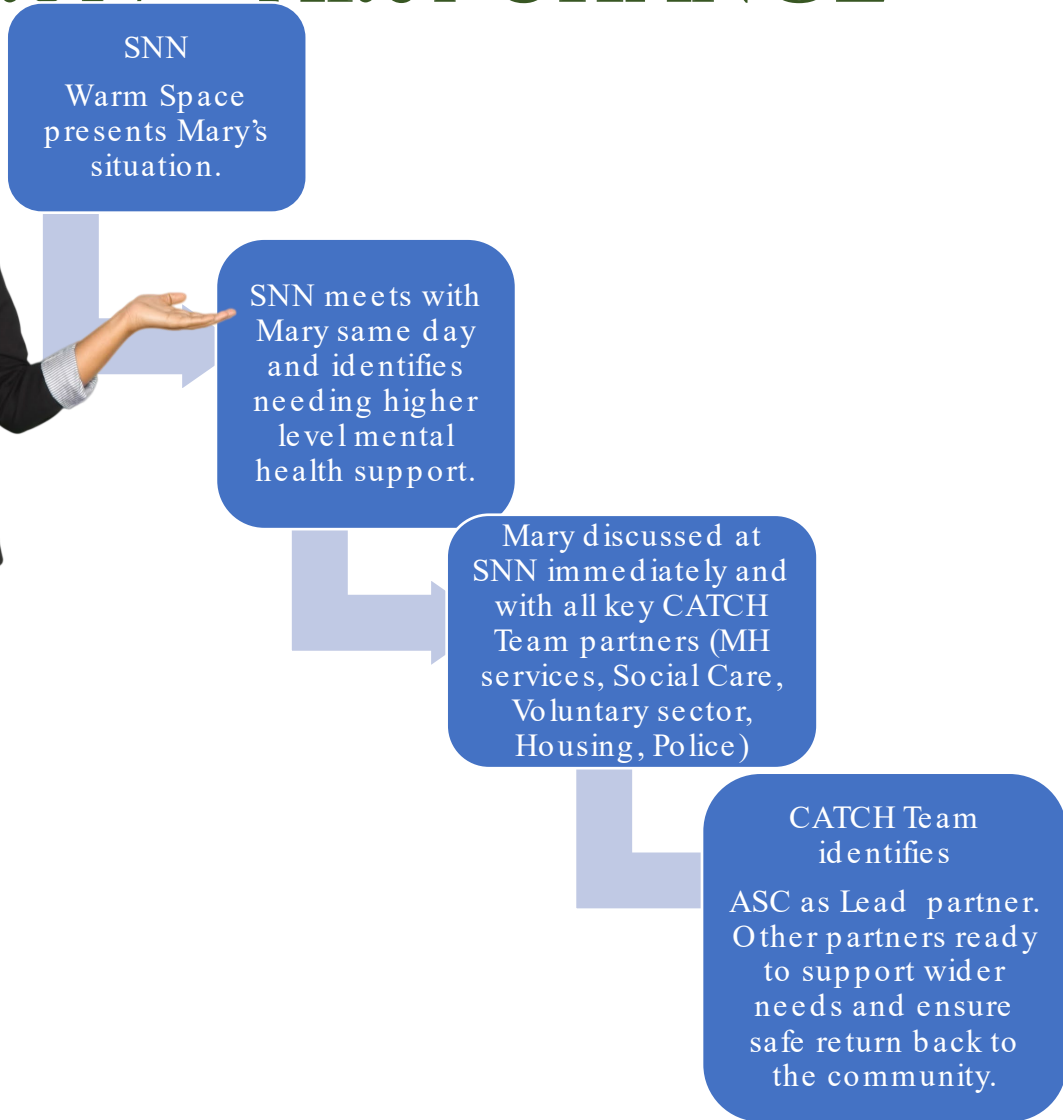


# Support North Northants (SNN)

An integrated service | A better way of working together

Tackling poverty, overcoming health inequalities,  
building healthier and resilient communities

## Mary's Story - After CHANGE



## Aligning with existing Services

SUPPORT NORTH  
NORTHAMPTONSHIRE

SINGLE ENTRY POINT

CATCH TEAM

BUILDING RESILIENCE

Public Sector Contracts  
COMMISSIONING

Social Prescribing

Public Health

Carers Support

Ageing Well

Be friending

Mental health services

Learning Disability services

Family and Children Services

Reablement

Support for Discharge

Personal care and support

Domestic Abuse services

Other.....

Wider VCSE clusters of support  
BUILDING CAPACITY AND RESILIENCE

Benefits Advice

Housing Support & Advocacy

Food and basic support (white goods, cloths, IT  
equipment, household equipment)

Home safety and improvement

Gardening

Baby and children equipment

Community Spaces and Centres

Warm spaces

Physical health and wellbeing

Employment Support

Faith groups

Young People provision

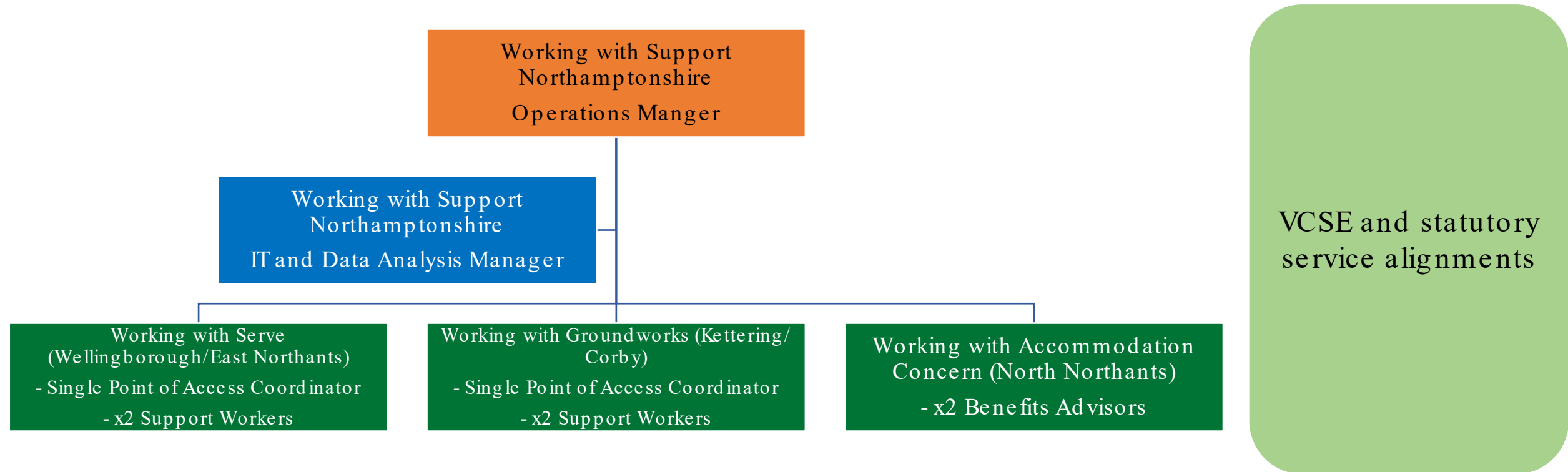
Arts and Culture Groups

Informal Networks of Support

Other.....

## SNN An interim collaborative staffing structure

test and learn phase May 2023 - March 2024



VCSE and statutory  
service alignments

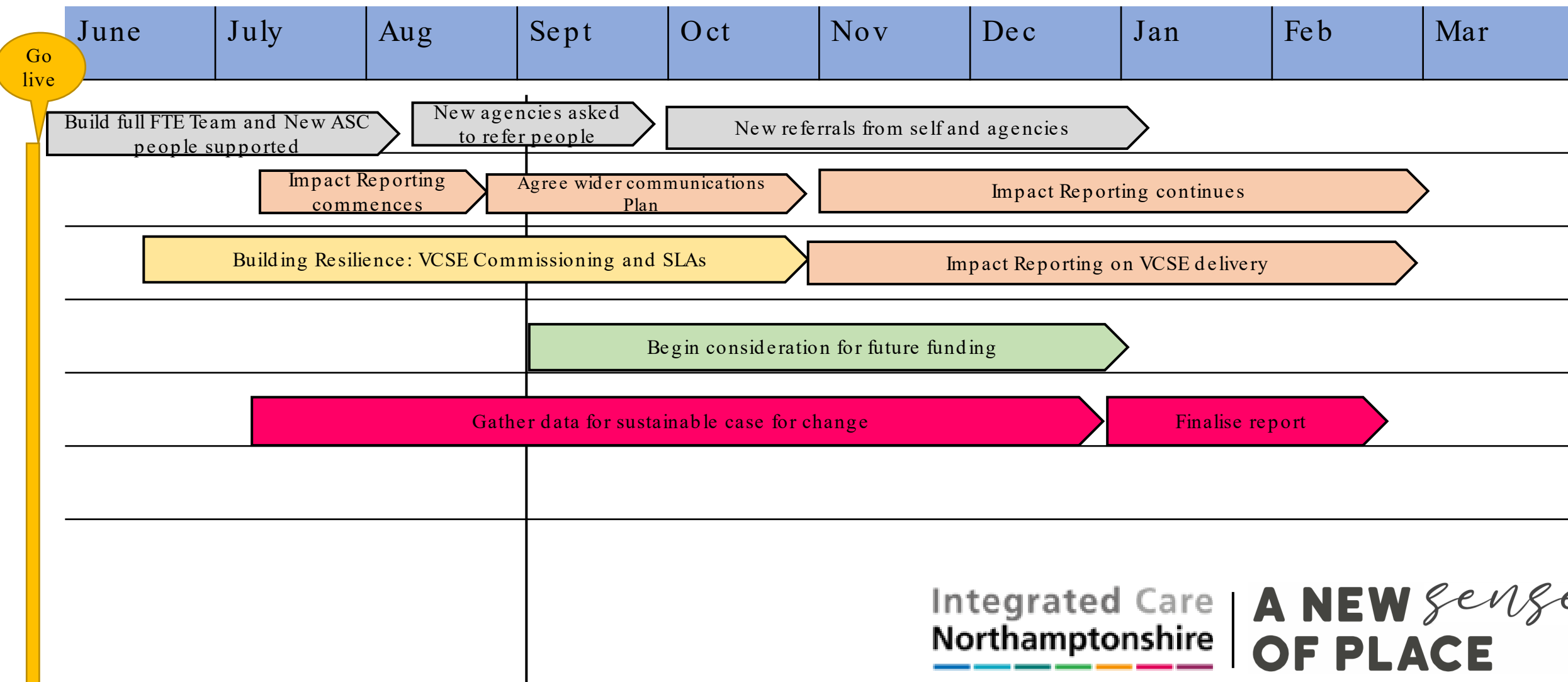
VCSE investment in supporting people and building  
independence and resilience

# Support North Northants (SNN)

An integrated service | A better way of working together

Tackling poverty, overcoming health inequalities,  
building healthier and resilient communities

## SNN Programme Plan 2023

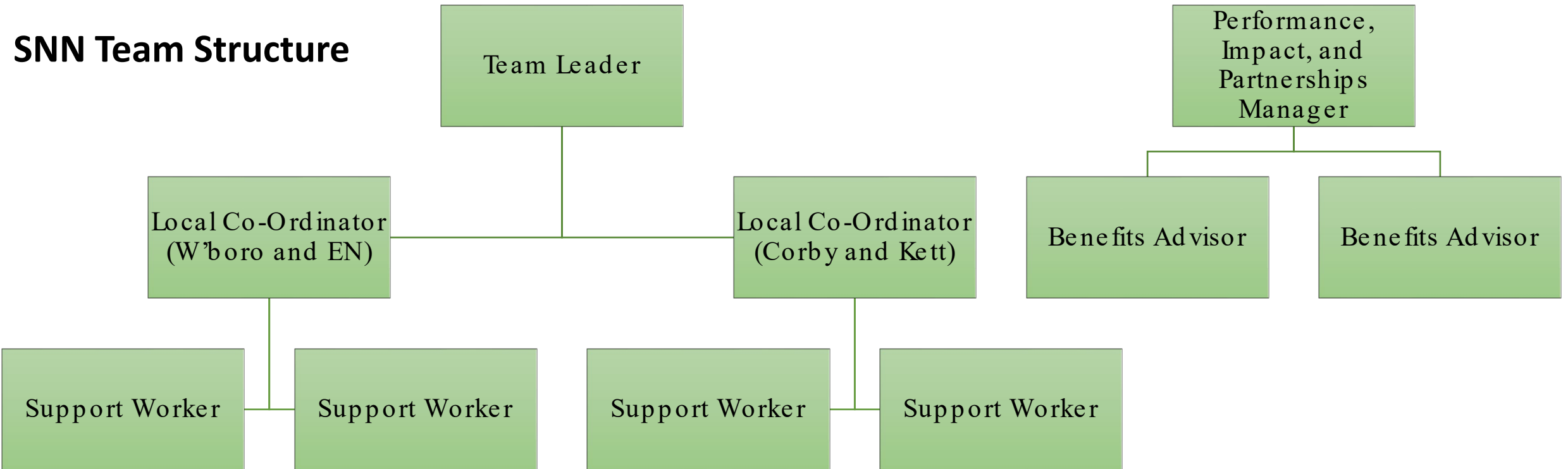


# Support North Northants (SNN)

An integrated service | A better way of working together

Tackling poverty, overcoming health inequalities,  
building healthier and resilient communities

## SNN Team Structure



## Host SNN Partners

- Support Northamptonshire
- SERVE
- Groundworks Northamptonshire
- Accommodation Concern

- 45 referrals (June – August)
- 28 partners organisations involved
  - 9 statutory sector
  - 4 housing associations
  - 15 VCSE sector

Integrated Care  
Northamptonshire

**A NEW** *sense*  
**OF PLACE**

## Progress- infrastructure

- Following successful first round of recruitment and with key roles started, team structure has been revised to ensure more capacity at team leader level.
- 2<sup>nd</sup> round recruitment successful and all outstanding posts now filled. Team will be at full capacity by mid-Sept.
- Benefits advice is being provided to all SNN clients
- Comprehensive 3-week induction and team building programme delivered.
- Model continues to be socialised -across Adult Social Care, NNC Housing, Community Safety, Refugee Resettlement, Public Health, NNC Childrens and Education, Greatwell Homes, Longhurst Housing Group, Community Safety Partnership Board
- Cluster meetings continue with VCSE partners and first SLAs for core VCSE partners agreed
- Service user forum members mobilised
- IT platform being developed, tested and in use
- Longer term IT hardware provider/maintenance secured
- Privacy Notice adopted, consent-based model

## Soft Launch programme & cases: June-Aug 2023

- 45 cases in total
- Working with Adult Social Care, so far taken 40 cases from their waiting list.
- These people are being progressed through the SNN service, working collaboratively with the Adults front door and community hub teams and other services as appropriate.
- Most are higher complexity cases (level 3 and 4) which is why none have been closed to date.
- Now taking cases from Housing Associations, Greatwell Homes and Longhurst since mid August. Positive engagement based on idea at a LAP to create a multi-agency vulnerable people panel. SNN provides this in the model
- Self referrals emerging as well
- Data, case studies and learning are being documented to test and evidence SNN process and adapt it as required.
- Outputs and outcomes, data and case studies are being considered by the SNN Programme team as a basis for the Sustainable Case for Change
- First quarter Impact report being developed – ready for September
- Positive feedback from ADASS inspectors about SNN model

## Soft Launch programme & cases: June-Aug 2023

Prevention activity being contributed to by SNN through agency collaboration and problem solving:

- Preventing need for care packages, by improving people's situation
- Income maximisation to prevent financial hardship
- Preventing re-presentation to statutory agencies
- Reduction of pressure on statutory housing services
- Preventing some hospital admissions and re-admissions
- Preventing some GP appointments and enabling others where health conditions not being managed
- Preventing duplication through significant co-ordination between different agencies

## Case Studies

## Expansion of model

- Meeting planned with Health colleagues re frequent fliers to Accident and Emergency
- Looking at taking cases from Reablement team in Adults where VCSE may be better placed to provide wraparound support for people in their own homes at a more preventative level
- Further work with NNC Housing services on joint working on cases relating to tenants and those at risk of homelessness
- Further VCSE engagement to encourage referrals and joint working

## Programme Risks

Initial RAG	Risk/Issue	Mitigation	Post mitigation RAG
Yellow	<ul style="list-style-type: none"> <li>Workload against capacity SNN</li> </ul>	<ul style="list-style-type: none"> <li>Careful and phased management of growth in the services</li> <li>Quicker induction of new staff</li> <li>Building greater levels of collaboration with partners so partners can support where possible</li> </ul>	Yellow
Yellow	<ul style="list-style-type: none"> <li>Engagement of more partners to align services and support</li> </ul>	<ul style="list-style-type: none"> <li>VCSE Cluster meetings to commence asap with small grants</li> <li>Working with Housing associations on a collaborative basis</li> </ul>	Green
Yellow	<ul style="list-style-type: none"> <li>Impact reporting to ensure real time information</li> </ul>	<ul style="list-style-type: none"> <li>Impact reports being produced every 3 months so that this can demonstrate impact of SNN</li> <li>Quantitative and qualitative analysis</li> <li>Case studies</li> </ul>	Green
Red	<ul style="list-style-type: none"> <li>Future Funding –current work ends at the end of March 2023</li> </ul>	<ul style="list-style-type: none"> <li>Sustainable Case for Change being built up –key workstream</li> <li>Meetings with ASC and other partners ongoing</li> <li>Impact reports evidence and need and outcomes</li> </ul>	Yellow

## Ask and Next Steps

- Share model with your teams if they are working with people who might benefit from integrated support, or where they are stuck.
- VCSE Cluster meetings continuing and further SLAs developed
- Ongoing socialisation of programme across statutory partners
- Meet with Health colleagues re repeat demand cases that come through A&E
- Develop process flows for partners for the initial introduction of people they are working with into SNN
- Finalise quarter one impact report
- Recruitment of volunteers to support service

‘Let’s not give up on people’

‘Let’s catch people early’

‘Let’s grasp the opportunity the ICS presents to transform’